

For Research Use Only

# ASPN Polyclonal antibody, PBS Only

Catalog Number: 27602-1-PBS



## Basic Information

<b>Catalog Number:</b> 27602-1-PBS	<b>GenBank Accession Number:</b> BC063114	<b>Purification Method:</b> Antigen affinity purification
<b>Size:</b> 1 mg/ml	<b>GeneID (NCBI):</b> 54829	
<b>Source:</b> Rabbit	<b>UNIPROT ID:</b> Q9BXN1	
<b>Isotype:</b> IgG	<b>Full Name:</b> asporin	
<b>Immunogen Catalog Number:</b> AG26380	<b>Calculated MW:</b> 384 aa, 44 kDa	
	<b>Observed MW:</b> 43 kDa	

## Applications

**Tested Applications:**  
WB, IHC, Indirect ELISA

**Species Specificity:**  
human

## Background Information

ASPN, also known as periodontal ligament-associated protein1 (PLAP1), is an extracellular matrix (ECM) protein. The calculated molecular weight of ASPN is 43 kDa. It belongs to the small leucine-rich proteoglycans (SLRPs) family and contains a unique aspartate-rich N terminus that distinguishes it from other SLRPs family members. It was firstly identified in human cartilage and it was associated with the pathogenesis of bone and joint diseases, including osteoarthritis, intervertebral disc degeneration and periodontal ligament mineralization (PMID:11152692; 26089687).

## Storage

**Storage:**  
Store at -80°C.  
**The product is shipped with ice packs. Upon receipt, store it immediately at -80°C**

**Storage Buffer:**  
PBS Only

For technical support and original validation data for this product please contact:

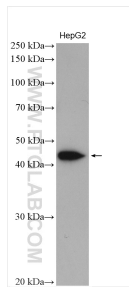
T: 4006900926

E: [Proteintech-CN@ptglab.com](mailto:Proteintech-CN@ptglab.com)

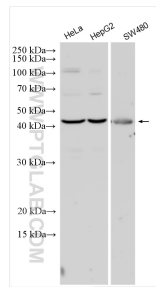
W: [ptgcn.com](http://ptgcn.com)

**This product is exclusively available under Proteintech Group brand and is not available to purchase from any other manufacturer.**

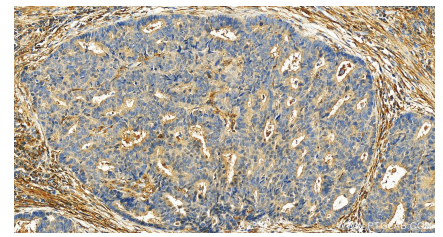
## Selected Validation Data



HepG2 cells were subjected to SDS PAGE followed by western blot with 27602-1-AP (ASPEN antibody) at dilution of 1:1000 incubated at room temperature for 1.5 hours. This data was developed using the same antibody clone with 27602-1-PBS in a different storage buffer formulation.



Various lysates were subjected to SDS PAGE followed by western blot with 27602-1-AP (ASPEN antibody) at dilution of 1:2000 incubated at room temperature for 1.5 hours. This data was developed using the same antibody clone with 27602-1-PBS in a different storage buffer formulation.



Immunohistochemical analysis of paraffin-embedded human stomach cancer tissue slide using 27602-1-AP (ASPEN antibody) at dilution of 1:200 (under 20x lens). Heat mediated antigen retrieval with Tris-EDTA buffer (pH 9.0). This data was developed using the same antibody clone with 27602-1-PBS in a different storage buffer formulation.