

For Research Use Only

# CIDEB Polyclonal antibody

Catalog Number: 27600-1-AP **2 Publications**



## Basic Information

<b>Catalog Number:</b> 27600-1-AP	<b>GenBank Accession Number:</b> BC035970	<b>Purification Method:</b> Antigen affinity purification
<b>Size:</b> 350 µg/ml	<b>GeneID (NCBI):</b> 27141	<b>Recommended Dilutions:</b> WB 1:500-1:3000 IHC 1:50-1:500
<b>Source:</b> Rabbit	<b>UNIPROT ID:</b> Q9UHD4	
<b>Isotype:</b> IgG	<b>Full Name:</b> cell death-inducing DFFA-like effector b	
<b>Immunogen Catalog Number:</b> AG27003	<b>Calculated MW:</b> 219 aa, 28 kDa	
	<b>Observed MW:</b> 28 kDa	

## Applications

<b>Tested Applications:</b> IHC, WB, ELISA	<b>Positive Controls:</b> WB : HepG2 cells, L02 cells
<b>Cited Applications:</b> WB	<b>IHC :</b> mouse liver tissue,
<b>Species Specificity:</b> Human, mouse	
<b>Cited Species:</b> human, mouse	

**Note-IHC: suggested antigen retrieval with TE buffer pH 9.0; (\*) Alternatively, antigen retrieval may be performed with citrate buffer pH 6.0**

## Background Information

Cell death - inducing DFFA - like effector B (CIDEB), an ER and lipid droplet (LD) - associated protein primarily expressed in the liver, participated in lipid metabolism by regulating lipid droplet fusion and VLDL lipitation. Although CIDEA is expressed at high levels in brown adipose tissue (BAT) and CIDEA is highly enriched in white adipose tissue (WAT) and BAT, CIDEB is more abundant in liver, kidney, small intestine, and colon. CIDEB is localized to endoplasmic reticulum and lipid droplets. (PMID: 30858281, PMID: 24831470, PMID: 19187774)

## Notable Publications

Author	Pubmed ID	Journal	Application
Changying Li	32325343	J Hazard Mater	WB
Wen-Jing Yun	38241178	Cancer Biol Ther	WB

## Storage

**Storage:**  
Store at -20°C. Stable for one year after shipment.  
**Storage Buffer:**  
PBS with 0.02% sodium azide and 50% glycerol pH 7.3.  
Aliquoting is unnecessary for -20°C storage

For technical support and original validation data for this product please contact:

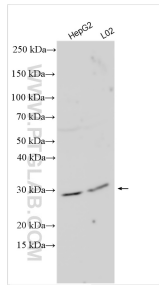
T: 4006900926

E: Proteintech-CN@ptglab.com

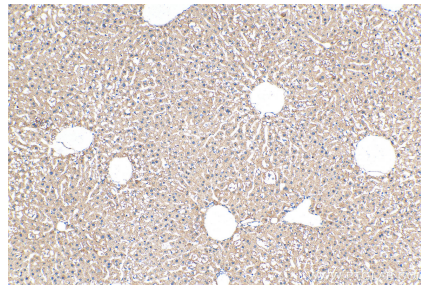
W: ptgcn.com

**This product is exclusively available under Proteintech Group brand and is not available to purchase from any other manufacturer.**

## Selected Validation Data



Various lysates were subjected to SDS PAGE followed by western blot with 27600-1-AP (CIDEB antibody) at dilution of 1:1500 incubated at room temperature for 1.5 hours.



Immunohistochemical analysis of paraffin-embedded mouse liver tissue slide using 27600-1-AP (CIDEB antibody) at dilution of 1:200 (under 10x lens). Heat mediated antigen retrieval with Tris-EDTA buffer (pH 9.0).