

For Research Use Only

SLC24A3 Polyclonal antibody

Catalog Number: 27591-1-AP



Basic Information

Catalog Number:

27591-1-AP

Source:

Rabbit

Isotype:

IgG

Immunogen Catalog Number:

AG26297

GenBank Accession Number:

NM_020689

GeneID (NCBI):

57419

UNIPROT ID:

Q9HC58

Full Name:

solute carrier family 24
(sodium/potassium/calcium
exchanger), member 3

Calculated MW:

72 kDa

Observed MW:

50-60 kDa

Purification Method:

Antigen affinity purification

Recommended Dilutions:

WB: 1:500-1:2000

Applications

Tested Applications:

WB, ELISA

Species Specificity:

human, mouse, rat

Positive Controls:

WB: mouse brain tissue, mouse heart tissue, rat brain
tissue, rat heart tissue

Background Information

SLC24A3, also known as NCKX3 (Na⁺/K⁺/Ca²⁺ exchanger 3), is a member of the solute carrier family 24 (SLC24), which comprises five K⁺-dependent Na⁺/Ca²⁺ exchangers (NCKX1-5). These transporters are critical for maintaining intracellular calcium homeostasis by coupling the extrusion of one Ca²⁺ ion and one K⁺ ion to the influx of four Na⁺ ions. SLC24A3 plays a key role in calcium signaling and homeostasis, influencing processes such as neurotransmission, smooth muscle contraction, and female reproductive physiology. Relatively high levels of SLC24A3 expression can be observed in heart tissue, consistent with the expression patterns reported in the literature. The observed molecular weight of SLC24A3 is 50-60 kDa, which is consistent with the literature description. (PMID: 21573014, PMID: 28588505)

Storage

Storage:

Store at -20°C. Stable for one year after shipment.

Storage Buffer:

PBS with 0.02% sodium azide and 50% glycerol, pH7.3

Aliquoting is unnecessary for -20°C storage

For technical support and original validation data for this product please contact:

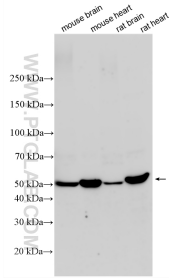
T: 4006900926

E: Proteintech-CN@ptglab.com

W: ptgcn.com

This product is exclusively available under Proteintech Group brand and is not available to purchase from any other manufacturer.

Selected Validation Data



Various lysates were subjected to SDS PAGE followed by western blot with 27591-1-AP (SLC24A3 antibody) at dilution of 1:1000 incubated at room temperature for 1.5 hours.