

# RYR2 Polyclonal antibody

Catalog Number: 27587-1-AP

## Basic Information

<b>Catalog Number:</b> 27587-1-AP	<b>GenBank Accession Number:</b> NM_001035	<b>Purification Method:</b> Antigen affinity purification
<b>Size:</b> 750 µg/ml	<b>GeneID (NCBI):</b> 6262	<b>Recommended Dilutions:</b> IHC 1:50-1:500
<b>Source:</b> Rabbit	<b>UNIPROT ID:</b> Q92736	IF-P 1:50-1:500
<b>Isotype:</b> IgG	<b>Full Name:</b> ryanodine receptor 2 (cardiac)	
<b>Immunogen Catalog Number:</b> AG26296	<b>Calculated MW:</b> 565 kDa	

## Applications

<b>Tested Applications:</b> IF-P, IHC, ELISA, FC (Intra)	<b>Positive Controls:</b>
<b>Species Specificity:</b> Human, mouse	<b>IHC :</b> human heart tissue,
	<b>IF-P :</b> mouse heart tissue,

**Note-IHC: suggested antigen retrieval with TE buffer pH 9.0; (\*) Alternatively, antigen retrieval may be performed with citrate buffer pH 6.0**

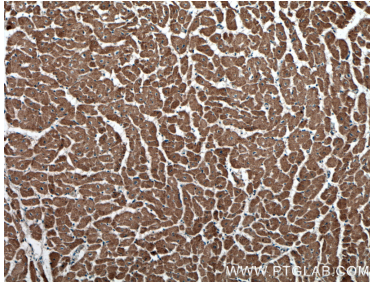
## Background Information

RYR2 belongs to the ryanodine receptor family. RYR2 provides communication between transverse-tubules and sarcoplasmic reticulum. Contraction of cardiac muscle is triggered by release of calcium ions from SR following depolarization of T-tubules. Defects in RYR2 are the cause of familial arrhythmogenic right ventricular dysplasia type 2 (ARVD2) which known as arrhythmogenic right ventricular cardiomyopathy 2 (ARVC2). Defects in RYR2 are the cause of catecholaminergic polymorphic ventricular tachycardia type 1 (CPVT1) which known as stress-induced polymorphic ventricular tachycardia (VTSIP).

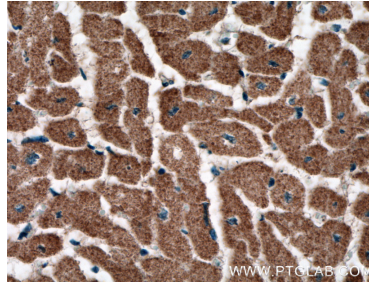
## Storage

**Storage:**  
Store at -20°C. Stable for one year after shipment.  
**Storage Buffer:**  
PBS with 0.02% sodium azide and 50% glycerol pH 7.3.  
**Aliquoting is unnecessary for -20°C storage**

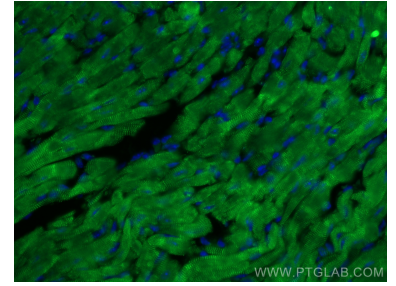
## Selected Validation Data



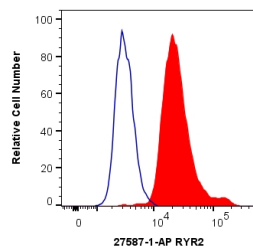
Immunohistochemical analysis of paraffin-embedded human heart tissue slide using 27587-1-AP (RyR2 antibody) at dilution of 1:200 (under 10x lens).



Immunohistochemical analysis of paraffin-embedded human heart tissue slide using 27587-1-AP (RyR2 antibody) at dilution of 1:200 (under 40x lens).



Immunofluorescent analysis of (4% PFA) fixed mouse heart tissue using RyR2 antibody (27587-1-AP) at dilution of 1:200 and CoraLite®488-Conjugated AffiniPure Goat Anti-Rabbit IgG(H+L).



1X10<sup>6</sup> HEK-293T cells were intracellularly stained with 0.4 ug Anti-Human RyR2 (27587-1-AP) and CoraLite®488-Conjugated AffiniPure Goat Anti-Rabbit IgG(H+L) at dilution 1:1000 (red), or 0.4 ug Isotype Control. Cells were fixed with 4% PFA and permeabilized with Flow Cytometry Perm Buffer (PF00011-C).