

For Research Use Only

# SLC6A19 Polyclonal antibody

Catalog Number: 27575-1-AP



## Basic Information

Catalog Number:

27575-1-AP

Size:

650 ug/ml

Source:

Rabbit

Isotype:

IgG

Immunogen Catalog Number:

AG24362

GenBank Accession Number:

BC148801

GeneID (NCBI):

340024

UNIPROT ID:

Q695T7

Full Name:

solute carrier family 6 (neutral amino acid transporter), member 19

Calculated MW:

634 aa, 71 kDa

Observed MW:

71 kDa

Purification Method:

Antigen affinity purification

Recommended Dilutions:

WB 1:500-1:1000

IHC 1:200-1:800

## Applications

Tested Applications:

WB, IHC, ELISA

Species Specificity:

human, mouse

**Note-IHC: suggested antigen retrieval with TE buffer pH 9.0; (\*) Alternatively, antigen retrieval may be performed with citrate buffer pH 6.0**

Positive Controls:

WB : Caco-2 cells, mouse kidney tissue, PC-3 cells, mouse small intestine tissue

IHC : human small intestine tissue,

## Background Information

SLC6A19, also named as B0AT1, encodes system B(0) transmembrane protein that mediates epithelial resorption of neutral amino acids across the apical membrane in kidney and intestine (PubMed: 15044460). The protein contains 634 amino acids and has 12 predicted transmembrane regions with highly expression in human kidney and small intestine and minimal in pancreas (PubMed: 15286787). The expression of SLC6A19 in intestinal cells depends on angiotensin converting enzyme 2 which is the cellular receptor for SARS-CoV-2 (PubMed: 32132184). Mutations in SLC6A19 cause Hartnup disease (PMID: 15286787, PMID: 15286788).

## Storage

Storage:

Store at -20°C. Stable for one year after shipment.

Storage Buffer:

PBS with 0.02% sodium azide and 50% glycerol pH 7.3.

Aliquoting is unnecessary for -20°C storage

For technical support and original validation data for this product please contact:

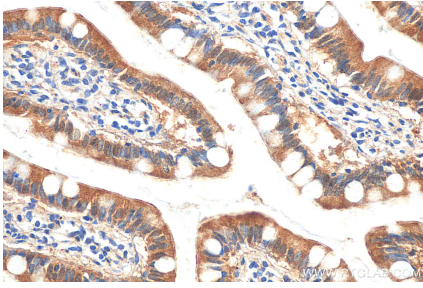
T: 4006900926

E: Proteintech-CN@ptglab.com

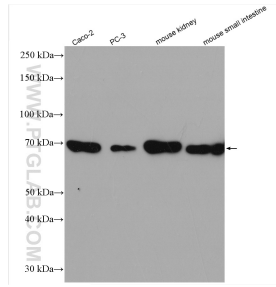
W: ptgcn.com

**This product is exclusively available under Proteintech Group brand and is not available to purchase from any other manufacturer.**

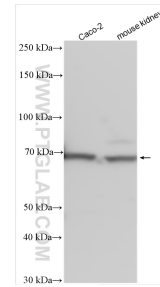
## Selected Validation Data



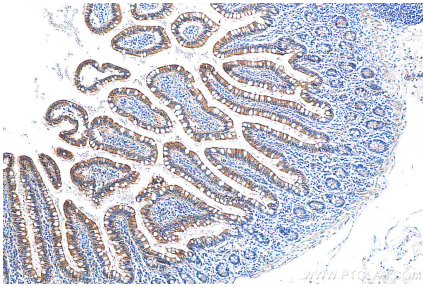
Immunohistochemical analysis of paraffin-embedded human small intestine tissue slide using 27575-1-AP (SLC6A19 antibody) at dilution of 1:400 (under 40x lens).



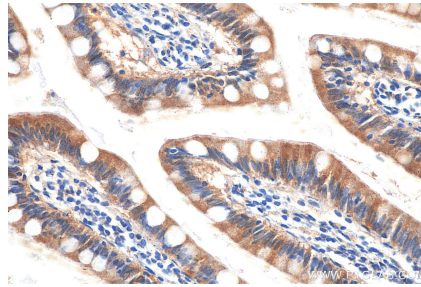
Various lysates were subjected to SDS PAGE followed by western blot with 27575-1-AP (SLC6A19 antibody) at dilution of 1:500 incubated at room temperature for 1.5 hours.



Various lysates were subjected to SDS PAGE followed by western blot with 27575-1-AP (SLC6A19 antibody) at dilution of 1:1000 incubated at room temperature for 1.5 hours.



Immunohistochemical analysis of paraffin-embedded human small intestine tissue slide using 27575-1-AP (SLC6A19 antibody) at dilution of 1:800 (under 10x lens).



Immunohistochemical analysis of paraffin-embedded human small intestine tissue slide using 27575-1-AP (SLC6A19 antibody) at dilution of 1:800 (under 40x lens).