

For Research Use Only

MAP7D3 Polyclonal antibody

Catalog Number: 27573-1-AP



Basic Information

Catalog Number:

27573-1-AP

Source:

Rabbit

Isotype:

IgG

Immunogen Catalog Number:

AG26082

GenBank Accession Number:

NM_001173516

GeneID (NCBI):

79649

UNIPROT ID:

Q8IWC1

Full Name:

MAP7 domain containing 3

Calculated MW:

98 kDa

Observed MW:

125-130 kDa

Purification Method:

Antigen affinity purification

Recommended Dilutions:

WB: 1:500-1:3000

Applications

Tested Applications:

WB, ELISA

Species Specificity:

human

Positive Controls:

WB : A549 cells, Calu-1 cells, HeLa cells, MDA-MB-468 cells, SH-SY5Y cells, SK-N-SH cells

Background Information

MAP7D3, also known as MDP3, features two coiled-coil regions near its N terminus, followed by a linker region, a MAP7-like domain, and a C-terminal domain. MAP7D3 is a microtubule-binding protein that regulates microtubule assembly and stability. MAP7D3 expression is cell cycle dependent, with lower expression in the G2 phase compared to its expression in the other phases of the cell cycle (PMID: 22142902).

Storage

Storage:

Store at -20°C. Stable for one year after shipment.

Storage Buffer:

PBS with 0.02% sodium azide and 50% glycerol, pH7.3

Aliquoting is unnecessary for -20°C storage

For technical support and original validation data for this product please contact:

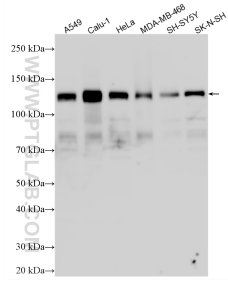
T: 4006900926

E: Proteintech-CN@ptglab.com

W: ptgcn.com

This product is exclusively available under Proteintech Group brand and is not available to purchase from any other manufacturer.

Selected Validation Data



Various lysates were subjected to SDS PAGE followed by western blot with 27573-1-AP (MAP7D3 antibody) at dilution of 1:1500 incubated at room temperature for 1.5 hours.