

For Research Use Only

GLUT5 Polyclonal antibody

Catalog Number: 27571-1-AP

Featured Product

9 Publications



Basic Information

Catalog Number:

27571-1-AP

Size:

550 ug/ml

Source:

Rabbit

Isotype:

IgG

Immunogen Catalog Number:

AG25682

GenBank Accession Number:

BC001820

GeneID (NCBI):

6518

UNIPROT ID:

P22732

Full Name:

solute carrier family 2 (facilitated glucose/fructose transporter), member 5

Calculated MW:

55 kDa

Observed MW:

48-70 kDa

Purification Method:

Antigen affinity purification

Recommended Dilutions:

WB 1:500-1:2000

IHC 1:50-1:500

Applications

Tested Applications:

WB, IHC, ELISA

Cited Applications:

WB, IHC

Species Specificity:

human, mouse, rat

Cited Species:

human, mouse

Note-IHC: suggested antigen retrieval with TE buffer pH 9.0; (*) Alternatively, antigen retrieval may be performed with citrate buffer pH 6.0

Positive Controls:

WB : Caco-2 cells, A549 cells, mouse kidney tissue, rat testis tissue

IHC : human breast cancer tissue, human lung cancer tissue

Background Information

GLUT5, also known as SLC2A5, is a fructose transporter expressed on the apical border of enterocytes in the small intestine. GLUT5 allows for fructose to be transported from the intestinal lumen into the enterocyte by facilitated diffusion due to fructose's high concentration in the intestinal lumen (PMID: 12750891). GLUT5 is also expressed in skeletal muscle, testis, kidney, fat tissue (adipocytes), and brain (PMID: 9781312, 18398011).

Notable Publications

Author	Pubmed ID	Journal	Application
Yu Zhang	35777901	J Adv Res	WB
Kai Aoki	34065342	Nutrients	WB
Hu Hua	33598642	iScience	WB

Storage

Storage:

Store at -20°C. Stable for one year after shipment.

Storage Buffer:

PBS with 0.02% sodium azide and 50% glycerol pH 7.3.

Aliquoting is unnecessary for -20°C storage

For technical support and original validation data for this product please contact:

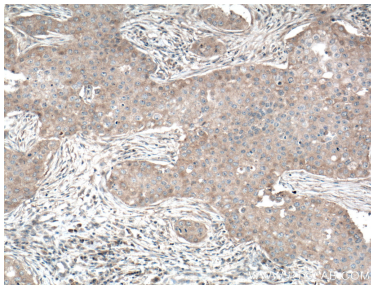
T: 4006900926

E: Proteintech-CN@ptglab.com

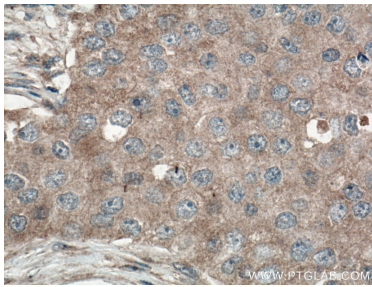
W: ptgcn.com

This product is exclusively available under Proteintech Group brand and is not available to purchase from any other manufacturer.

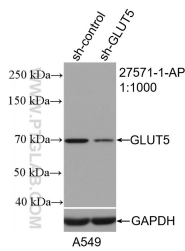
Selected Validation Data



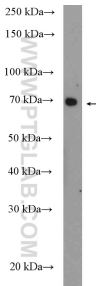
Immunohistochemical analysis of paraffin-embedded human breast cancer tissue slide using 27571-1-AP (GLUT5 antibody) at dilution of 1:200 (under 10x lens. Heat mediated antigen retrieval with Tris-EDTA buffer (pH 9.0)).



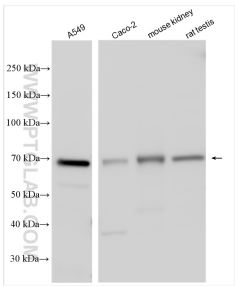
Immunohistochemical analysis of paraffin-embedded human breast cancer tissue slide using 27571-1-AP (GLUT5 antibody) at dilution of 1:200 (under 40x lens. Heat mediated antigen retrieval with Tris-EDTA buffer (pH 9.0)).



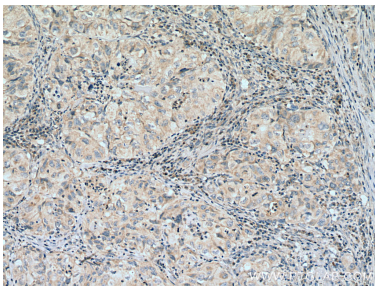
WB result of GLUT5 antibody (27571-1-AP; 1:1000; incubated at room temperature for 1.5 hours) with sh-Control and sh-GLUT5 transfected A549 cells.



Caco-2 cells were subjected to SDS PAGE followed by western blot with 27571-1-AP (GLUT5 antibody) at dilution of 1:1000 incubated at room temperature for 1.5 hours.



Various lysates were subjected to SDS PAGE followed by western blot with 27571-1-AP (GLUT5 antibody) at dilution of 1:800 incubated at room temperature for 1.5 hours.



Immunohistochemical analysis of paraffin-embedded human lung cancer tissue slide using 27571-1-AP (GLUT5 antibody) at dilution of 1:200 (under 10x lens). Heat mediated antigen retrieval with Tris-EDTA buffer (pH 9.0).