

For Research Use Only

C1GALT1 Polyclonal antibody, PBS Only

Catalog Number: 27569-1-PBS



Basic Information

Catalog Number:

27569-1-PBS

Concentration:

1 mg/ml

Source:

Rabbit

Isotype:

IgG

Immunogen Catalog Number:

AG26144

GenBank Accession Number:

NM_020156

GeneID (NCBI):

56913

UNIPROT ID:

Q9NS00

Full Name:

core 1 synthase, glycoprotein-N-acetylgalactosamine 3-beta-galactosyltransferase, 1

Calculated MW:

42 kDa

Observed MW:

42-45 kDa

Purification Method:

Antigen affinity purification

Applications

Tested Applications:

WB, IF/ICC, Indirect ELISA

Species Specificity:

human

Background Information

C1GALT1 (Glycoprotein-N-acetylgalactosamine 3-beta-galactosyltransferase 1), also known as B3Gal-T8, catalyzes the transfer of galactose (Gal) from UDP-Gal to N-acetylgalactosamine (GalNAc) O-linked esters of threonine and serine residues of target proteins, including IgA1, to form the T antigen (PMID: 28209808). C1GalT1 is overexpressed in many common cancers including colon, breast, gastric, lung, head and neck, pancreatic, esophageal, prostate, and hepatocellular cancer (PMID: 34944925). C1GALT1 protein contains 363 amino acids and is a type II transmembrane protein. Rate C1GalT1 is an 84/86kDa disulfide-bonded homodimer, but its active form is believed to be a 42/43 kDa monomeric protein (PMID: 34149900).

Storage

Storage:

Store at -80°C.

The product is shipped with ice packs. Upon receipt, store it immediately at -80°C

Storage Buffer:

PBS only, pH7.3

For technical support and original validation data for this product please contact:

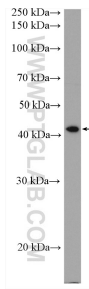
T: 4006900926

E: Proteintech-CN@ptglab.com

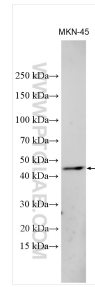
W: ptgcn.com

This product is exclusively available under Proteintech Group brand and is not available to purchase from any other manufacturer.

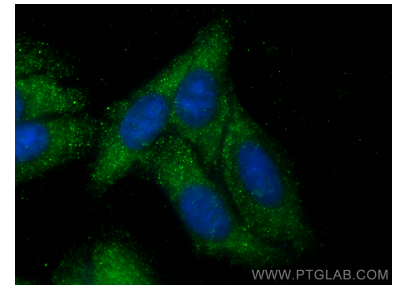
Selected Validation Data



T-47D cells were subjected to SDS PAGE followed by western blot with 27569-1-AP (C1GALT1 antibody) at dilution of 1:600 incubated at room temperature for 1.5 hours. This data was developed using the same antibody clone with 27569-1-PBS in a different storage buffer formulation.



Various lysates were subjected to SDS PAGE followed by western blot with 27569-1-AP (C1GALT1 antibody) at dilution of 1:1000 incubated at room temperature for 1.5 hours. This data was developed using the same antibody clone with 27569-1-PBS in a different storage buffer formulation.



Immunofluorescent analysis of (-20°C Ethanol) fixed HepG2 cells using C1GALT1 antibody (27569-1-AP) at dilution of 1:200 and CoraLite@488-Conjugated Goat Anti-Rabbit IgG(H+L) (SA00013-2). This data was developed using the same antibody clone with 27569-1-PBS in a different storage buffer formulation.