

For Research Use Only

SUN2 Polyclonal antibody

Catalog Number: 27556-1-AP

Featured Product

3 Publications



Basic Information

Catalog Number:

27556-1-AP

Source:

Rabbit

Isotype:

IgG

Immunogen Catalog Number:

AG16077

GenBank Accession Number:

BC111717

GeneID (NCBI):

25777

UNIPROT ID:

Q9UH99

Full Name:

unc-84 homolog B (C. elegans)

Calculated MW:

717 aa, 80 kDa

Observed MW:

80-85 kDa

Purification Method:

Antigen affinity purification

Recommended Dilutions:

WB: 1:5000-1:50000

IHC: 1:500-1:2000

IF/ICC: 1:200-1:800

Applications

Tested Applications:

WB, IHC, IF/ICC, ELISA

Cited Applications:

WB, IF

Species Specificity:

human, mouse

Cited Species:

human

Note-IHC: suggested antigen retrieval with TE buffer pH 9.0; (*) Alternatively, antigen retrieval may be performed with citrate buffer pH 6.0

Positive Controls:

WB : HeLa cells, mouse testis tissue, Jurkat cells, Saos-2 cells

IHC : human stomach tissue,

IF/ICC : HeLa cells,

Background Information

SUN2, also known as UNC84B, RAB5IP, belongs to the SUN (Sad1 and UNC84) protein family, which is a group of conserved proteins in eukaryotes. SUN2 is a key component of the LINC (Linker of Nucleoskeleton and Cytoskeleton) complex, which connects the nuclear lamina to the cytoskeleton. This connection is crucial for the transmission of mechanical forces across the nuclear envelope and for nuclear movement and positioning (PMID: 18396275).

Notable Publications

Author	Pubmed ID	Journal	Application
Chao Yang	39288611	Virology	WB
Yihong Li	38821061	Cancer Cell	WB
Yanxia Huang	38177122	Nat Commun	WB,IF

Storage

Storage:

Store at -20°C. Stable for one year after shipment.

Storage Buffer:

PBS with 0.02% sodium azide and 50% glycerol, pH7.3

Aliquoting is unnecessary for -20°C storage

For technical support and original validation data for this product please contact:

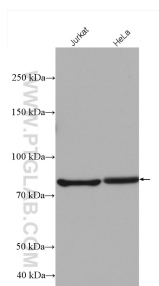
T: 4006900926

E: Proteintech-CN@ptglab.com

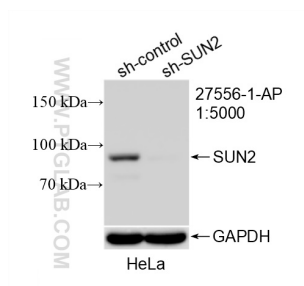
W: ptgcn.com

This product is exclusively available under Proteintech Group brand and is not available to purchase from any other manufacturer.

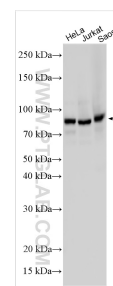
Selected Validation Data



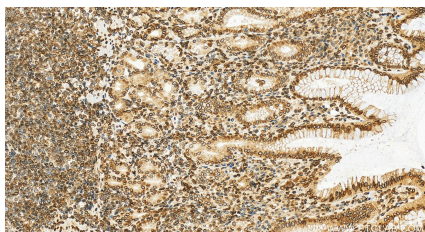
Various lysates were subjected to SDS PAGE followed by western blot with 27556-1-AP (SUN2 antibody) at dilution of 1:4000 incubated at room temperature for 1.5 hours.



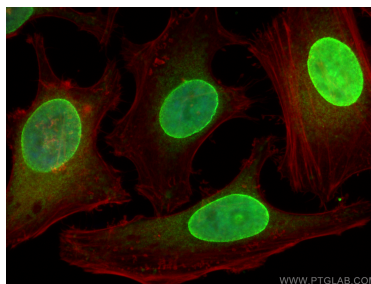
WB result of SUN2 antibody (27556-1-AP; 1:5000; incubated at room temperature for 1.5 hours) with sh-Control and sh-SUN2 transfected HeLa cells.



Various lysates were subjected to SDS PAGE followed by western blot with 27556-1-AP (SUN2 antibody) at dilution of 1:10000 incubated at room temperature for 1.5 hours.



Immunohistochemical analysis of paraffin-embedded human stomach tissue slide using 27556-1-AP (SUN2 antibody) at dilution of 1:1000 (under 20x lens). Heat mediated antigen retrieval with Tris-EDTA buffer (pH 9.0).



Immunofluorescent analysis of (4% PFA) fixed HeLa cells using SUN2 antibody (27556-1-AP) at dilution of 1:400 and CoraLite®488-Conjugated AffiniPure Goat Anti-Rabbit IgG(H+L), CL594-Phalloidin (red).