

For Research Use Only

SLC31A1 Polyclonal antibody

Catalog Number: 27499-1-AP

Featured Product

2 Publications



Basic Information

Catalog Number:

27499-1-AP

Size:

550 µg/ml

Source:

Rabbit

Isotype:

IgG

Immunogen Catalog Number:

AG26601

GenBank Accession Number:

BC013611

GeneID (NCBI):

1317

UNIPROT ID:

O15431

Full Name:

solute carrier family 31 (copper transporters), member 1

Calculated MW:

21 kDa

Observed MW:

21-25,30-35,60-70 kDa

Purification Method:

Antigen affinity purification

Recommended Dilutions:

WB 1:500-1:1000

IF 1:50-1:500

Applications

Tested Applications:

FC, IF-P, WB, ELISA

Cited Applications:

WB

Species Specificity:

Human, mouse

Cited Species:

human

Positive Controls:

WB : HT-29 cells, Caco-2 cells, HeLa cells

IF : human liver cancer tissue,

Background Information

Notable Publications

Author	Pubmed ID	Journal	Application
Hong Yang	36293101	Int J Mol Sci	WB
Trace M Jones	36860653	Cancer Res Commun	WB

Storage

Storage:

Store at -20°C. Stable for one year after shipment.

Storage Buffer:

PBS with 0.02% sodium azide and 50% glycerol pH 7.3.

Aliquoting is unnecessary for -20°C storage

For technical support and original validation data for this product please contact:

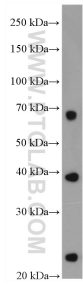
T: 4006900926

E: Proteintech-CN@ptglab.com

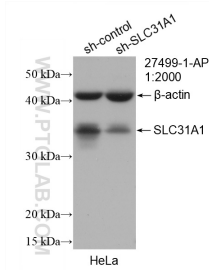
W: ptgcn.com

This product is exclusively available under Proteintech Group brand and is not available to purchase from any other manufacturer.

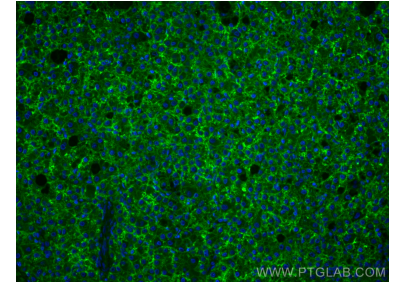
Selected Validation Data



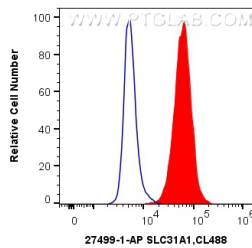
HT-29 cells were subjected to SDS PAGE followed by western blot with 27499-1-AP (SLC31A1 antibody) at dilution of 1:500 incubated at room temperature for 1.5 hours.



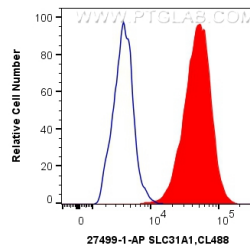
WB result of SLC31A1 antibody (27499-1-AP; 1:2000; incubated at room temperature for 1.5 hours) with sh-Control and sh-SLC31A1 transfected HeLa cells.



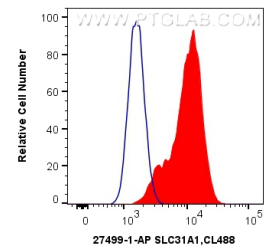
Immunofluorescent analysis of (4% PFA) fixed human liver cancer tissue using SLC31A1 antibody (27499-1-AP) at dilution of 1:200 and CoraLite®488-Conjugated AffiniPure Goat Anti-Rabbit IgG(H+L).



1X10⁶ HeLa cells were intracellularly stained with 0.4 ug Anti-Human SLC31A1 (27499-1-AP) and CoraLite®488-Conjugated AffiniPure Goat Anti-Rabbit IgG(H+L) at dilution 1:1000 (red), or 0.4 ug Control Antibody. Cells were fixed with 4% PFA and permeabilized with Flow Cytometry Perm Buffer (PF00011-C).



1X10⁶ Neuro-2a cells were intracellularly stained with 0.4 ug Anti-Human SLC31A1 (27499-1-AP) and CoraLite®488-Conjugated AffiniPure Goat Anti-Rabbit IgG(H+L) at dilution 1:1000 (red), or 0.4 ug Control Antibody. Cells were fixed with 4% PFA and permeabilized with Flow Cytometry Perm Buffer (PF00011-C).



1X10⁶ HeLa cells were surface stained with 0.4 ug Anti-Human SLC31A1 (27499-1-AP) and CoraLite®488-Conjugated AffiniPure Goat Anti-Rabbit IgG(H+L) at dilution 1:1000 (red), or 0.4 ug Control Antibody. Cells were not fixed.