

For Research Use Only

KLHL25 Polyclonal antibody

Catalog Number: 27482-1-AP



Basic Information

Catalog Number:

27482-1-AP

Size:

Source:

Rabbit

Isotype:

IgG

Immunogen Catalog Number:

AG25765

GenBank Accession Number:

BC028100

GeneID (NCBI):

64410

UNIPROT ID:

Q9H0H3

Full Name:

kelch-like 25 (Drosophila)

Observed MW:

66 kDa

Purification Method:

Antigen affinity purification

Recommended Dilutions:

WB 1:500-1:1000

IHC 1:50-1:500

IF/ICC 1:50-1:500

Applications

Tested Applications:

IF/ICC, IHC, WB, ELISA

Species Specificity:

human, mouse

Note-IHC: suggested antigen retrieval with TE buffer pH 9.0; (*) Alternatively, antigen retrieval may be performed with citrate buffer pH 6.0

Positive Controls:

WB : A549 cells,

IHC : mouse brain tissue,

IF/ICC : A549 cells,

Background Information

Storage

Storage:

Store at -20°C. Stable for one year after shipment.

Storage Buffer:

PBS with 0.02% sodium azide and 50% glycerol pH 7.3.

Aliquoting is unnecessary for -20°C storage

For technical support and original validation data for this product please contact:

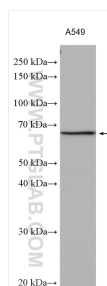
T: 4006900926

E: Proteintech-CN@ptglab.com

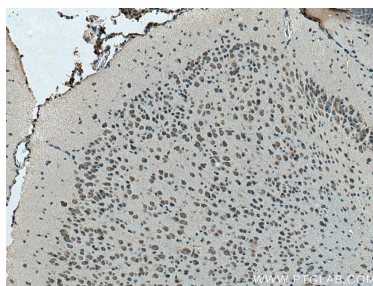
W: ptgcn.com

This product is exclusively available under Proteintech Group brand and is not available to purchase from any other manufacturer.

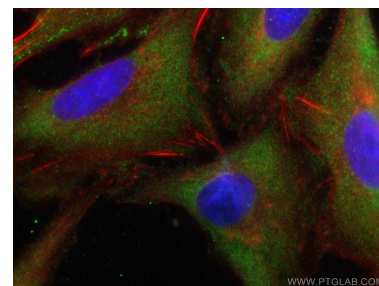
Selected Validation Data



A549 cells were subjected to SDS PAGE followed by western blot with 27482-1-AP (KLHL25 antibody) at dilution of 1:600 incubated at room temperature for 1.5 hours.



Immunohistochemical analysis of paraffin-embedded mouse brain tissue slide using 27482-1-AP (KLHL25 antibody) at dilution of 1:200 (under 10x lens). Heat mediated antigen retrieval with Tris-EDTA buffer (pH 9.0).



Immunofluorescent analysis of (-20°C Ethanol) fixed A549 cells using KLHL25 antibody (27482-1-AP) at dilution of 1:200 and CoraLite®488-Conjugated AffiniPure Goat Anti-Rabbit IgG(H+L), CL594-Phalloidin (red).