

# Kininogen 1 Polyclonal antibody

Catalog Number: 27477-1-AP

## Basic Information

<b>Catalog Number:</b> 27477-1-AP	<b>GenBank Accession Number:</b> BC060039	<b>Purification Method:</b> Antigen affinity purification
<b>Size:</b> 400 µg/ml	<b>GeneID (NCBI):</b> 3827	<b>Recommended Dilutions:</b> WB 1:1000-1:6000 IHC 1:50-1:500
<b>Source:</b> Rabbit	<b>UNIPROT ID:</b> P01042	
<b>Isotype:</b> IgG	<b>Full Name:</b> kininogen 1	
<b>Immunogen Catalog Number:</b> AG26467	<b>Calculated MW:</b> 644 aa, 72 kDa <b>Observed MW:</b> 70-72 kDa	

## Applications

<b>Tested Applications:</b> IHC, WB, ELISA	<b>Positive Controls:</b> WB : A2780 cells, HeLa cells, HepG2 cells IHC : human kidney tissue,
<b>Species Specificity:</b> human	
<b>Note-IHC:</b> suggested antigen retrieval with <b>TE buffer pH 9.0; (*) Alternatively, antigen retrieval may be performed with citrate buffer pH 6.0</b>	

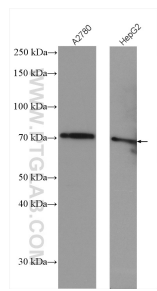
## Background Information

Kininogens are inhibitors of thiol proteases. Kininogen 1 plays important role in Kinin-kallikrein system. This gene is translated into High-molecular weight kininogen (HMWK) and low-molecular weight kininogen (LMWK) after alternative splicing. HMWK is produced by the liver together with prekallikrein. It acts mainly as a cofactor on coagulation and inflammation, and has no intrinsic catalytic activity. LMWK is produced locally by numerous tissues, and secreted together with tissue kallikrein.

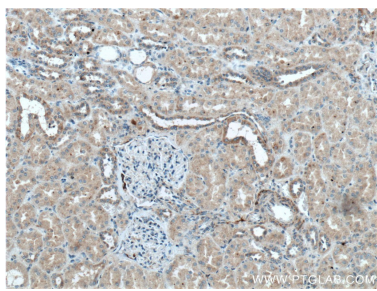
## Storage

**Storage:**  
Store at -20°C. Stable for one year after shipment.  
**Storage Buffer:**  
PBS with 0.02% sodium azide and 50% glycerol pH 7.3.  
**Aliquoting is unnecessary for -20°C storage**

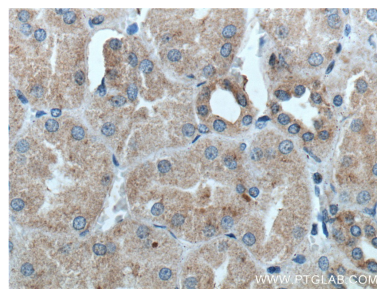
Selected Validation Data



Various lysates were subjected to SDS PAGE followed by western blot with 27477-1-AP (Kininogen 1 antibody) at dilution of 1:3000 incubated at room temperature for 1.5 hours.



Immunohistochemical analysis of paraffin-embedded human kidney tissue slide using 27477-1-AP (Kininogen 1 antibody) at dilution of 1:200 (under 10x lens).



Immunohistochemical analysis of paraffin-embedded human kidney tissue slide using 27477-1-AP (Kininogen 1 antibody) at dilution of 1:200 (under 40x lens).