

SELENBP1 Polyclonal antibody

Catalog Number: 27449-1-AP

Basic Information

Catalog Number:

27449-1-AP

Size:

550 ug/ml

Source:

Rabbit

Isotype:

IgG

Immunogen Catalog Number:

AG24453

GenBank Accession Number:

BC009084

GeneID (NCBI):

8991

UNIPROT ID:

Q13228

Full Name:

selenium binding protein 1

Calculated MW:

52 kDa

Observed MW:

56 kDa

Purification Method:

Antigen affinity purification

Recommended Dilutions:

WB 1:1000-1:4000

IHC 1:500-1:2000

Applications

Tested Applications:

WB, IHC, ELISA

Species Specificity:

human, mouse, rat

Note-IHC: suggested antigen retrieval with TE buffer pH 9.0; (*) Alternatively, antigen retrieval may be performed with citrate buffer pH 6.0

Positive Controls:

WB : HEK-293 cells, mouse liver tissue, L02 cells, MCF-7 cells

IHC : human liver cancer tissue, human colon tissue, rat liver tissue

Background Information

SELENBP1 (selenium binding protein 1, SBP1), also known as LPSB or SP56, is a 472 amino acid peripheral membrane protein that binds selenium covalently. Selenium, an essential trace element, has been shown to have an anti-cancer effect. Many reports have described a relationship between insufficient selenium intake and increased risk of cancer. Moreover, the expression of SELENBP1 has been shown to be decreased in several tumors including cancers of the prostate, lungs, colon, and ovary (PMID: 21143902, 20332323, 18272210). SELENBP1 has four isoforms with the molecular mass of 56kD, 52kD and 45kD.

Storage

Storage:

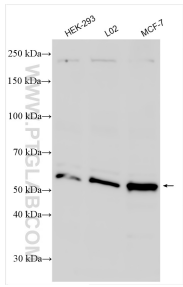
Store at -20°C. Stable for one year after shipment.

Storage Buffer:

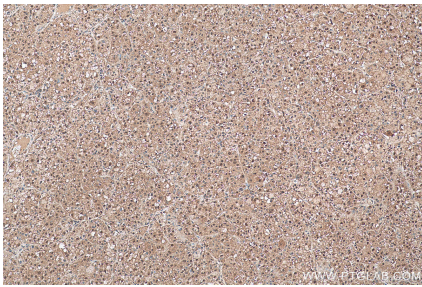
PBS with 0.02% sodium azide and 50% glycerol pH 7.3.

Aliquoting is unnecessary for -20°C storage

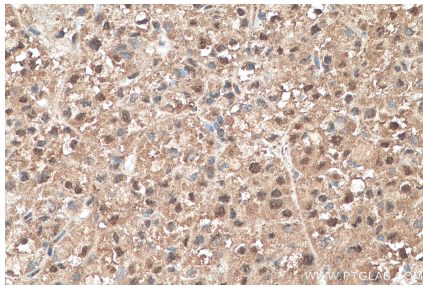
Selected Validation Data



Various lysates were subjected to SDS PAGE followed by western blot with 27449-1-AP (SELENBP1 antibody) at dilution of 1:2000 incubated at room temperature for 1.5 hours.



Immunohistochemical analysis of paraffin-embedded human liver cancer tissue slide using 27449-1-AP (SELENBP1 antibody) at dilution of 1:1000 (under 10x lens). Heat mediated antigen retrieval with Tris-EDTA buffer (pH 9.0).



Immunohistochemical analysis of paraffin-embedded human liver cancer tissue slide using 27449-1-AP (SELENBP1 antibody) at dilution of 1:1000 (under 40x lens). Heat mediated antigen retrieval with Tris-EDTA buffer (pH 9.0).