

For Research Use Only

# NKAP Polyclonal antibody

Catalog Number: 27437-1-AP



## Basic Information

<b>Catalog Number:</b> 27437-1-AP	<b>GenBank Accession Number:</b> BC015354	<b>Purification Method:</b> Antigen affinity purification
<b>Size:</b> 270 µg/ml	<b>GeneID (NCBI):</b> 79576	<b>Recommended Dilutions:</b> WB 1:500-1:2000
<b>Source:</b> Rabbit	<b>UNIPROT ID:</b> Q8N5F7	
<b>Isotype:</b> IgG	<b>Full Name:</b> NFKB activating protein	
<b>Immunogen Catalog Number:</b> AG26637	<b>Calculated MW:</b> 415 aa, 47 kDa	
	<b>Observed MW:</b> 47-50 kDa	

## Applications

<b>Tested Applications:</b> WB, ELISA	<b>Positive Controls:</b> WB : A549 cells, HeLa cells, Jurkat cells, K-562 cells
<b>Species Specificity:</b> human	

## Background Information

NKAP is a multifunctional nuclear protein that is involved in the activation of the ubiquitous transcription factor NF-kappaB. NKAP is associated with the histone deacetylase HDAC3 and with the Notch corepressor complex, and it thereby acts as a transcriptional repressor of Notch target genes. It is also required for alpha beta T cell development. A related pseudogene has been identified on chromosome X, while a related and intronless retrocopy, which has an intact CDS and may be functional, is located on chromosome 6.

## Storage

**Storage:**  
Store at -20°C. Stable for one year after shipment.  
**Storage Buffer:**  
PBS with 0.02% sodium azide and 50% glycerol pH 7.3.  
Aliquoting is unnecessary for -20°C storage

For technical support and original validation data for this product please contact:

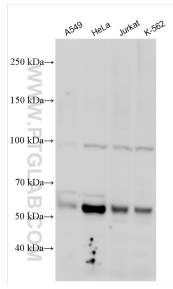
T: 4006900926

E: [Proteintech-CN@ptglab.com](mailto:Proteintech-CN@ptglab.com)

W: [ptgcn.com](http://ptgcn.com)

**This product is exclusively available under Proteintech Group brand and is not available to purchase from any other manufacturer.**

## Selected Validation Data



Various lysates were subjected to SDS PAGE followed by western blot with 27437-1-AP (NKAP antibody) at dilution of 1:1000 incubated at room temperature for 1.5 hours.