

For Research Use Only

B7-H6 Polyclonal antibody

Catalog Number: 27428-1-AP



Basic Information

Catalog Number:

27428-1-AP

Size:

450 ug/ml

Source:

Rabbit

Isotype:

IgG

Immunogen Catalog Number:

AG26532

GenBank Accession Number:

BC136800

GeneID (NCBI):

374383

UNIPROT ID:

Q68D85

Full Name:

hypothetical protein

DKFZp686O24166

Calculated MW:

51 kDa

Observed MW:

75-80 kDa

Purification Method:

Antigen affinity purification

Recommended Dilutions:

WB 1:1000-1:4000

Applications

Tested Applications:

WB, ELISA

Species Specificity:

human

Positive Controls:

WB : HEK-293 cells, HeLa cells, HepG2 cells

Background Information

B7-H6, also known as NCR3LG1, is a member of the B7 family of immunoreceptors. It is a 454-aa-long type I transmembrane protein consisting of an extracellular region, a transmembrane segment, and a cytoplasmic domain which contains an immunoreceptor tyrosine-based inhibitory motif (ITIM), an SH2-binding domain, and an SH3-binding motif. B7-H6 triggers Nkp30-mediated activation of human NK cells (PMID: 19528259). It has been reported that B7H6 is expressed in various types of tumor cells and plays a prominent role in natural killer cell immunosurveillance (PMID: 35697295). The apparent molecular weight of B7-H6 is larger than the calculated molecular weight of 51 kDa due to glycosylation (PMID: 19528259).

Storage

Storage:

Store at -20°C. Stable for one year after shipment.

Storage Buffer:

PBS with 0.02% sodium azide and 50% glycerol pH 7.3.

Aliquoting is unnecessary for -20°C storage

For technical support and original validation data for this product please contact:

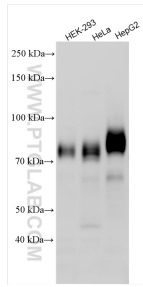
T: 4006900926

E: Proteintech-CN@ptglab.com

W: ptgcn.com

This product is exclusively available under Proteintech Group brand and is not available to purchase from any other manufacturer.

Selected Validation Data



Various lysates were subjected to SDS PAGE followed by western blot with 27428-1-AP (B7H6 antibody) at dilution of 1:2000 incubated at room temperature for 1.5 hours.