

For Research Use Only

# ELK1 Polyclonal antibody

Catalog Number: 27420-1-AP

Featured Product

8 Publications



## Basic Information

Catalog Number:

27420-1-AP

Size:

1200 µg/ml

Source:

Rabbit

Isotype:

IgG

Immunogen Catalog Number:

AG26683

GenBank Accession Number:

BC056150

GeneID (NCBI):

2002

UNIPROT ID:

P19419

Full Name:

ELK1, member of ETS oncogene family

Calculated MW:

45 kDa

Observed MW:

62 kDa

Purification Method:

Antigen affinity purification

Recommended Dilutions:

WB 1:1000-1:6000

## Applications

Tested Applications:

WB, ELISA

Cited Applications:

WB, IF, IHC, ChIP

Species Specificity:

human

Cited Species:

human, rat, mouse

Positive Controls:

WB : HEK-293 cells, HepG2 cells, HeLa cells, K-562 cells

## Background Information

### Notable Publications

Author	Pubmed ID	Journal	Application
Ranran Sun	33008587	Biochem Biophys Res Commun	WB
Akhlaq Ahmad	29892795	Genes Genomics	WB
Xue Li	35351142	J Transl Med	IHC

## Storage

Storage:

Store at -20°C. Stable for one year after shipment.

Storage Buffer:

PBS with 0.02% sodium azide and 50% glycerol pH 7.3.

Aliquoting is unnecessary for -20°C storage

For technical support and original validation data for this product please contact:

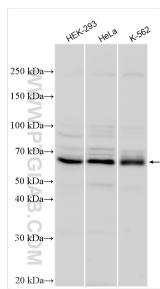
T: 4006900926

E: [Proteintech-CN@ptglab.com](mailto:Proteintech-CN@ptglab.com)

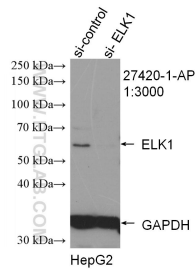
W: [ptgcn.com](http://ptgcn.com)

This product is exclusively available under Proteintech Group brand and is not available to purchase from any other manufacturer.

## Selected Validation Data



Various lysates were subjected to SDS PAGE followed by western blot with 27420-1-AP (ELK1 antibody) at dilution of 1:3000 incubated at room temperature for 1.5 hours.



WB result of ELK1 antibody (27420-1-AP; 1:3000; incubated at room temperature for 1.5 hours) with sh-Control and sh-ELK1 transfected HepG2 cells.