

For Research Use Only

# PD-L2/CD273 Polyclonal antibody, PBS Only

Catalog Number: 27406-1-PBS



## Basic Information

<b>Catalog Number:</b> 27406-1-PBS	<b>GenBank Accession Number:</b> BC074766	<b>Purification Method:</b> Antigen affinity purification
<b>Concentration:</b> 1 mg/ml	<b>GeneID (NCBI):</b> 80380	
<b>Source:</b> Rabbit	<b>UNIPROT ID:</b> Q9BQ51	
<b>Isotype:</b> IgG	<b>Full Name:</b> programmed cell death 1 ligand 2	
<b>Immunogen Catalog Number:</b> AG26384	<b>Calculated MW:</b> 273 aa, 31 kDa	
	<b>Observed MW:</b> 45 kDa	

## Applications

**Tested Applications:**  
WB, IHC, IF/ICC, Indirect ELISA

**Species Specificity:**  
human, mouse, rat

## Background Information

Programmed cell death 1 ligand 2 (PDCD1LG2), also known as PD-L2, CD273 and B7-DC, is an immune checkpoint receptor ligand which plays a role in negative regulation of the adaptive immune response. PDCD1LG2/PD-L2 protein is expressed mainly by dendritic cells, macrophages, and tumor cells, and down-regulates the effector functions of T cells via PD-1/PD-L2 axis in the tumor microenvironment (PMID: 30275216). The endogenous PDCD1LG2/PD-L2 protein displays a molecular weight of 45 kDa (glycosylated form), and a minor band at 35 kDa (non-glycosylated form) in western blot (PMID: 28811964, PMID: 34697216).

## Storage

**Storage:**  
Store at -80°C.  
**The product is shipped with ice packs. Upon receipt, store it immediately at -80°C**

**Storage Buffer:**  
PBS only, pH7.3

For technical support and original validation data for this product please contact:

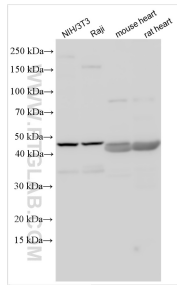
T: 4006900926

E: [Proteintech-CN@ptglab.com](mailto:Proteintech-CN@ptglab.com)

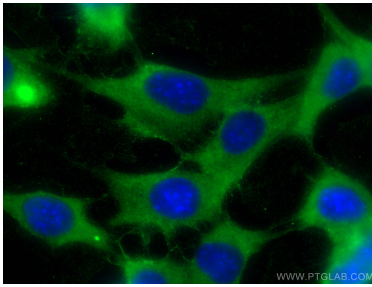
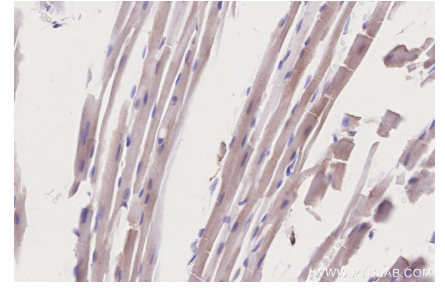
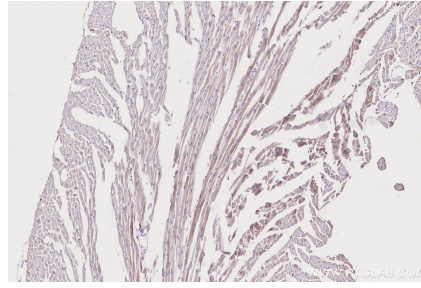
W: [ptgcn.com](http://ptgcn.com)

**This product is exclusively available under Proteintech Group brand and is not available to purchase from any other manufacturer.**

## Selected Validation Data



Various lysates were subjected to SDS PAGE followed by western blot with 27406-1-AP (PDCD1LG2/PD-L2 antibody) at dilution of 1:1500 incubated at room temperature for 1.5 hours. This data was developed using the same antibody clone with 27406-1-PBS in a different storage buffer formulation.



Immunofluorescent analysis of (-20°C Ethanol) fixed NIH/3T3 cells using PDCD1LG2/PD-L2 antibody (27406-1-AP) at dilution of 1:400 and CoraLite®488-Conjugated AffiniPure Goat Anti-Rabbit IgG(H+L). This data was developed using the same antibody clone with 27406-1-PBS in a different storage buffer formulation.