

For Research Use Only

# PD-L2/CD273 Polyclonal antibody

Catalog Number: 27406-1-AP



## Basic Information

Catalog Number:

27406-1-AP

Size:

450 ug/ml

Source:

Rabbit

Isotype:

IgG

Immunogen Catalog Number:

AG26384

GenBank Accession Number:

BC074766

GeneID (NCBI):

80380

UNIPROT ID:

Q9BQ51

Full Name:

programmed cell death 1 ligand 2

Calculated MW:

273 aa, 31 kDa

Observed MW:

45 kDa

Purification Method:

Antigen affinity purification

Recommended Dilutions:

WB 1:500-1:3000

IF/ICC 1:200-1:800

## Applications

Tested Applications:

WB, IF/ICC, ELISA

Species Specificity:

human, mouse, rat

Positive Controls:

WB : NIH/3T3 cells, Raji cells, mouse heart tissue, rat heart tissue

IF/ICC : NIH/3T3 cells,

## Background Information

Programmed cell death 1 ligand 2 (PDCD1LG2), also known as PD-L2, CD273 and B7-DC, is an immune checkpoint receptor ligand which plays a role in negative regulation of the adaptive immune response. PDCD1LG2/PD-L2 protein is expressed mainly by dendritic cells, macrophages, and tumor cells, and down-regulates the effector functions of T cells via PD-1/PD-L2 axis in the tumor microenvironment (PMID: 30275216). The endogenous PDCD1LG2/PD-L2 protein displays a molecular weight of 45 kDa (glycosylated form), and a minor band at 35 kDa (non-glycosylated form) in western blot (PMID: 28811964, PMID: 34697216).

## Storage

Storage:

Store at -20°C. Stable for one year after shipment.

Storage Buffer:

PBS with 0.02% sodium azide and 50% glycerol pH 7.3.

Aliquoting is unnecessary for -20°C storage

For technical support and original validation data for this product please contact:

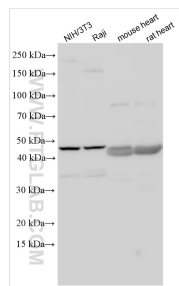
T: 4006900926

E: [Proteintech-CN@ptglab.com](mailto:Proteintech-CN@ptglab.com)

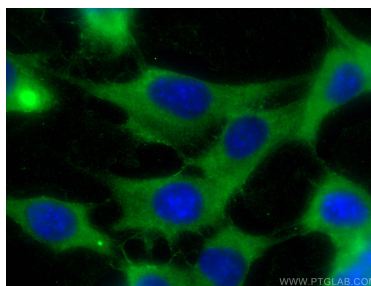
W: [ptgcn.com](http://ptgcn.com)

This product is exclusively available under Proteintech Group brand and is not available to purchase from any other manufacturer.

## Selected Validation Data



Various lysates were subjected to SDS PAGE followed by western blot with 27406-1-AP (PDCD1LG2/PD-L2 antibody) at dilution of 1:1500 incubated at room temperature for 1.5 hours.



Immunofluorescent analysis of (-20°C Ethanol) fixed NIH/3T3 cells using PDCD1LG2/PD-L2 antibody (27406-1-AP) at dilution of 1:400 and CoraLite®488-Conjugated AffiniPure Goat Anti-Rabbit IgG(H+L).