

# RGS8 Polyclonal antibody

Catalog Number: 27394-1-AP

## Basic Information

<b>Catalog Number:</b> 27394-1-AP	<b>GenBank Accession Number:</b> BC069718	<b>Purification Method:</b> Antigen affinity purification
<b>Concentration:</b> 300 ug/ml	<b>GeneID (NCBI):</b> 85397	<b>Recommended Dilutions:</b> WB 1:500-1:2000
<b>Source:</b> Rabbit	<b>UNIPROT ID:</b> P57771	IHC 1:50-1:500
<b>Isotype:</b> IgG	<b>Full Name:</b> regulator of G-protein signaling 8	IF-P 1:50-1:500
<b>Immunogen Catalog Number:</b> AG26535	<b>Calculated MW:</b> 198 aa, 23 kDa	
	<b>Observed MW:</b> 21 kDa	

## Applications

<b>Tested Applications:</b> WB, IHC, IF-P, ELISA	<b>Positive Controls:</b>
<b>Species Specificity:</b> human, mouse, rat	<b>WB :</b> mouse brain tissue, mouse liver tissue, rat brain tissue
<b>Note-IHC:</b> suggested antigen retrieval with <b>TE buffer pH 9.0; (*) Alternatively, antigen retrieval may be performed with citrate buffer pH 6.0</b>	<b>IHC :</b> mouse cerebellum tissue,
	<b>IF-P :</b> mouse cerebellum tissue,

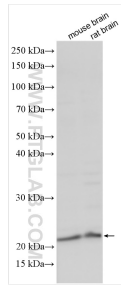
## Background Information

RGS8 is a member of the regulator of G protein signaling (RGS) family and encodes a protein with a single RGS domain. Regulator of G protein signaling (RGS) proteins are regulatory and structural components of G protein-coupled receptor complexes. They accelerate transit through the cycle of GTP binding and hydrolysis to GDP, thereby terminating signal transduction, but paradoxically, also accelerate receptor-stimulated activation.

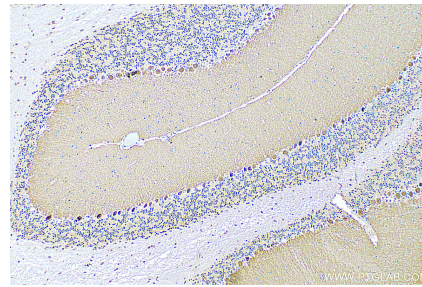
## Storage

**Storage:**  
Store at -20°C. Stable for one year after shipment.  
**Storage Buffer:**  
PBS with 0.02% sodium azide and 50% glycerol, pH7.3  
Aliquoting is unnecessary for -20°C storage

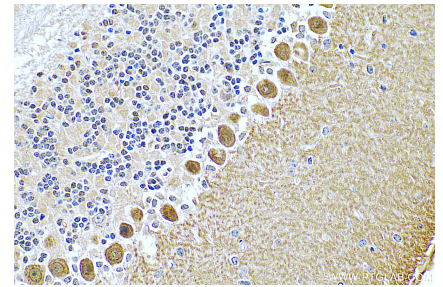
## Selected Validation Data



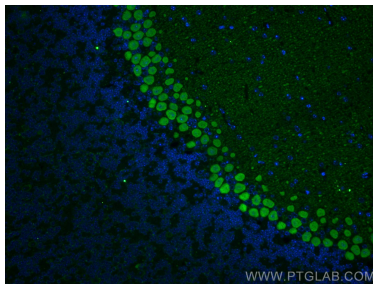
Various lysates were subjected to SDS PAGE followed by western blot with 27394-1-AP (RGS8 antibody) at dilution of 1:1000 incubated at room temperature for 1.5 hours.



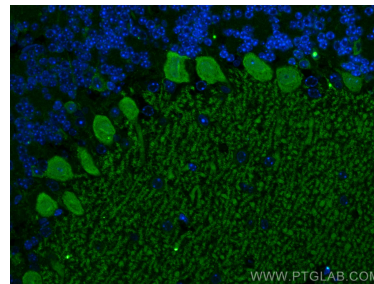
Immunohistochemical analysis of paraffin-embedded mouse cerebellum tissue slide using 27394-1-AP (RGS8 antibody) at dilution of 1:200 (under 10x lens). Heat mediated antigen retrieval with Tris-EDTA buffer (pH 9.0).



Immunohistochemical analysis of paraffin-embedded mouse cerebellum tissue slide using 27394-1-AP (RGS8 antibody) at dilution of 1:200 (under 40x lens). Heat mediated antigen retrieval with Tris-EDTA buffer (pH 9.0).



Immunofluorescent analysis of (4% PFA) fixed mouse cerebellum tissue using RGS8 antibody (27394-1-AP) at dilution of 1:200 and CoraLite®488-Conjugated AffiniPure Goat Anti-Rabbit IgG(H+L).



Immunofluorescent analysis of (4% PFA) fixed mouse cerebellum tissue using RGS8 antibody (27394-1-AP) at dilution of 1:200 and CoraLite®488-Conjugated AffiniPure Goat Anti-Rabbit IgG(H+L).