

For Research Use Only

# PPAP2B Polyclonal antibody, PBS Only

Catalog Number: 27391-1-PBS



## Basic Information

Catalog Number:

27391-1-PBS

Size:

1 mg/ml

Source:

Rabbit

Isotype:

IgG

Immunogen Catalog Number:

AG26422

GenBank Accession Number:

BC009196

GeneID (NCBI):

8613

UNIPROT ID:

O14495

Full Name:

phosphatidic acid phosphatase type

2B

Calculated MW:

35 kDa

Observed MW:

30-40 kDa

Purification Method:

Antigen affinity purification

## Applications

Tested Applications:

WB, Indirect ELISA

Species Specificity:

human, mouse

## Background Information

Phosphatidic acid phosphatase type 2B (PPAP2B), also known as Lipid phosphate phosphatase 3 (LPP3), is a member of the phosphatidic acid phosphatase (PAP) family. PPAP2B is an integral membrane protein that inactivates lysophosphatidic acid, was implicated in coronary artery disease (CAD) by genomewide association studies (PMID: 26034042). PPAP2B can be detected at least two immunoreactive bands with different mobility, ranging from 36 to 50 kDa, which may reflect oligomer formation and/or post-translational protein modifications, such as glycosylation (PMID: 28364255).

## Storage

Storage:

Store at -80°C.

**The product is shipped with ice packs. Upon receipt, store it immediately at -80°C**

Storage Buffer:

PBS Only

For technical support and original validation data for this product please contact:

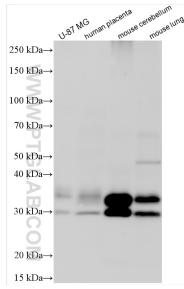
T: 4006900926

E: [Proteintech-CN@ptglab.com](mailto:Proteintech-CN@ptglab.com)

W: [ptgcn.com](http://ptgcn.com)

**This product is exclusively available under Proteintech Group brand and is not available to purchase from any other manufacturer.**

## Selected Validation Data



Various lysates were subjected to SDS PAGE followed by western blot with 27391-1-AP (PPAP2B antibody) at dilution of 1:1000 incubated at room temperature for 1.5 hours. This data was developed using the same antibody clone with 27391-1-PBS in a different storage buffer formulation.