

For Research Use Only

SPPL2B Polyclonal antibody

Catalog Number: 27370-1-AP



Basic Information

Catalog Number: 27370-1-AP	GenBank Accession Number: BC028391	Purification Method: Antigen affinity purification
Source: Rabbit	GeneID (NCBI): 56928	Recommended Dilutions: WB: 1:500-1:2000 IHC: 1:50-1:500
Isotype: IgG	UNIPROT ID: Q8TCT7	
Immunogen Catalog Number: AG25551	Full Name: signal peptide peptidase-like 2B	
	Calculated MW: 65 kDa	
	Observed MW: 56 kDa	

Applications

Tested Applications:

WB, IHC, ELISA

Species Specificity:

human, mouse

Note-IHC: suggested antigen retrieval with TE buffer pH 9.0; (*) Alternatively, antigen retrieval may be performed with citrate buffer pH 6.0

Positive Controls:

WB : RT-4 cells,

IHC : mouse brain tissue,

Background Information

SPPL2B (Signal Peptide Peptidase-Like 2B) is a multi-pass transmembrane aspartyl protease belonging to the GXGD family of intramembrane proteases. SPPL2B contains two conserved catalytic aspartate motifs localized within its membrane-spanning regions, similar to presenilins and γ -secretase. It localizes primarily to endosomes, lysosomes, and the plasma membrane, distinguishing it from ER-resident SPP and SPPL3. (PMID: 32052089, PMID: 19429495)

Storage

Storage:

Store at -20°C. Stable for one year after shipment.

Storage Buffer:

PBS with 0.02% sodium azide and 50% glycerol, pH7.3

Aliquoting is unnecessary for -20°C storage

For technical support and original validation data for this product please contact:

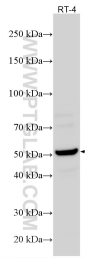
T: 4006900926

E: Proteintech-CN@ptglab.com

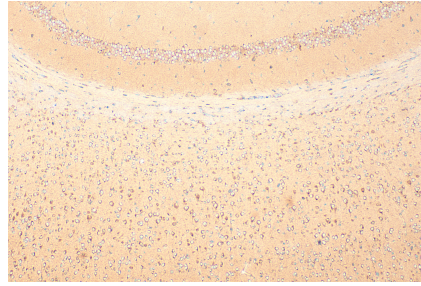
W: ptgcn.com

This product is exclusively available under Proteintech Group brand and is not available to purchase from any other manufacturer.

Selected Validation Data



RT-4 cells were subjected to SDS PAGE followed by western blot with 27370-1-AP (SPPL2B antibody) at dilution of 1:1000 incubated at room temperature for 1.5 hours.



Immunohistochemical analysis of paraffin-embedded mouse brain tissue slide using 27370-1-AP (SPPL2B antibody) at dilution of 1:200 (under 10x lens). Heat mediated antigen retrieval with Tris-EDTA buffer (pH 9.0).