

For Research Use Only

CHI3L2 Polyclonal antibody

Catalog Number: 27363-1-AP



Basic Information

Catalog Number:

27363-1-AP

Concentration:

850 ug/ml

Source:

Rabbit

Isotype:

IgG

Immunogen Catalog Number:

AG26386

GenBank Accession Number:

BC011460

GeneID (NCBI):

1117

UNIPROT ID:

Q15782

Full Name:

chitinase 3-like 2

Calculated MW:

390 aa, 44 kDa

Observed MW:

44-48 kDa

Purification Method:

Antigen affinity purification

Recommended Dilutions:

WB 1:500-1:2000

Applications

Tested Applications:

WB, ELISA

Species Specificity:

human

Positive Controls:

WB : HeLa cells, U-87 MG cells

Background Information

CHI3L2 (Chitinase-3-Like Protein 2), also known as YKL-39, is a member of the chitinase-like protein family, which belongs to the glycoside hydrolase 18 family. CHI3L2 is primarily involved in cartilage biogenesis and tissue remodeling. It is highly expressed in certain tissues, including the appendix and salivary glands.

Storage

Storage:

Store at -20°C. Stable for one year after shipment.

Storage Buffer:

PBS with 0.02% sodium azide and 50% glycerol pH 7.3.

Aliquoting is unnecessary for -20°C storage

For technical support and original validation data for this product please contact:

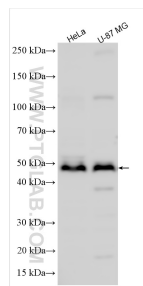
T: 4006900926

E: Proteintech-CN@ptglab.com

W: ptgcn.com

This product is exclusively available under Proteintech Group brand and is not available to purchase from any other manufacturer.

Selected Validation Data



Various lysates were subjected to SDS PAGE followed by western blot with 27363-1-AP (CHI3L2 antibody) at dilution of 1:1000 incubated at room temperature for 1.5 hours.