

For Research Use Only

IL-1R1 Polyclonal antibody, PBS Only

Catalog Number: 27348-1-PBS



Basic Information

| | | |
|---|---|--|
| Catalog Number: 27348-1-PBS | GenBank Accession Number: BC075063 | Purification Method: Antigen affinity purification |
| Size: 1 mg/ml | GeneID (NCBI): 3554 | |
| Source: Rabbit | UNIPROT ID: P14778 | |
| Isotype: IgG | Full Name: interleukin 1 receptor, type I | |
| Immunogen Catalog Number: AG25998 | Calculated MW: 569 aa, 65 kDa | |
| | Observed MW: 80 kDa, 60 kDa | |

Applications

Tested Applications:
WB, IHC, Indirect ELISA

Species Specificity:
human, mouse

Background Information

IL-1R1 (IL-1 receptor type 1, also known as p80, IL-1R-alpha or CD121a) is a 80 kDa transmembrane glycoprotein and a member of the interleukin-1 receptor family (PMID: 35163653; 29248002). It is a receptor for IL-1 α , IL-1 β , and interleukin-1 receptor antagonist (IL-1Ra). IL-1 α and IL-1 β interact with the extracellular domain of IL-1R1, triggering the recruitment of an accessory receptor, the IL-1RAcP, resulting in a functional receptor complex that initiates IL-1R1 signaling cascades (PMID: 35163653). IL-1Ra competes with active IL-1 and blocks binding to their common activating receptor IL-1R1 and, thus, inhibits IL-1 signaling (PMID: 35332327; 11641511). It has been reported that IL-1R1 may also bind IL-38 (PMID: 29248002). IL-1R1 expression has been found in many cell types including T cells, macrophages, neutrophils, eosinophils, basophils, mast cells, fibroblasts, and endothelial cells. IL-1R1 can be released from the cell surface following proteolytic cleavage, generating a soluble form of 55-60 kDa (PMID: 17324958).

Storage

Storage:
Store at -80°C.
The product is shipped with ice packs. Upon receipt, store it immediately at -80°C

Storage Buffer:
PBS Only

For technical support and original validation data for this product please contact:

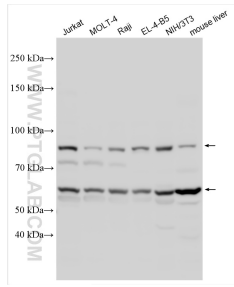
T: 4006900926

E: Proteintech-CN@ptglab.com

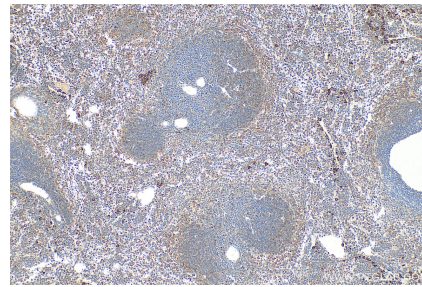
W: ptgcn.com

This product is exclusively available under Proteintech Group brand and is not available to purchase from any other manufacturer.

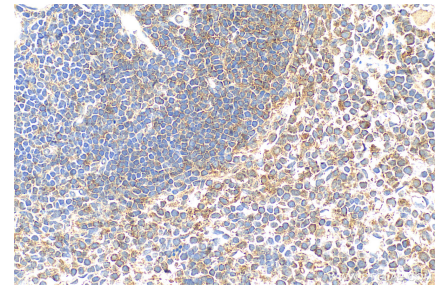
Selected Validation Data



Various lysates were subjected to SDS PAGE followed by western blot with 27348-1-AP (IL-1R1 antibody) at dilution of 1:2000 incubated at room temperature for 1.5 hours. This data was developed using the same antibody clone with 27348-1-PBS in a different storage buffer formulation.



Immunohistochemical analysis of paraffin-embedded mouse spleen tissue slide using 27348-1-AP (IL-1R1 antibody) at dilution of 1:600 (under 10x lens). Heat mediated antigen retrieval with Tris-EDTA buffer (pH 9.0). This data was developed using the same antibody clone with 27348-1-PBS in a different storage buffer formulation.



Immunohistochemical analysis of paraffin-embedded mouse spleen tissue slide using 27348-1-AP (IL-1R1 antibody) at dilution of 1:600 (under 40x lens). Heat mediated antigen retrieval with Tris-EDTA buffer (pH 9.0). This data was developed using the same antibody clone with 27348-1-PBS in a different storage buffer formulation.