

For Research Use Only

HEK 293 cells Polyclonal antibody

Catalog Number: 27347-1-AP

1 Publications



Basic Information

Catalog Number:

27347-1-AP

Size:

3500 µg/ml

Source:

Rabbit

Isotype:

IgG

GenBank Accession Number:

GeneID (NCBI):

Full Name:

Purification Method:

Protein A purification

Recommended Dilutions:

IF/ICC 1:500-1:2000

Applications

Tested Applications:

IF/ICC, ELISA

Cited Applications:

WB

Species Specificity:

human

Cited Species:

human

Positive Controls:

IF/ICC : HEK-293 cells,

Background Information

Human Embryonic Kidney 293 cells, also often referred to as HEK 293, 293 cells, or less precisely as HEK cells are a specific cell line originally derived from human embryonic kidney cells grown in tissue culture. HEK 293 cells were generated in early 70s by transformation of cultures of normal human embryonic kidney cells with sheared adenovirus 5 DNA in Alex Van der Eb's laboratory in Leiden, Holland. This antibody is designed to detect the protein of the HEK293 cells.

Notable Publications

| Author | Pubmed ID | Journal | Application |
|---------------|-----------|---------------------|-------------|
| Chiaki Sakuma | 33157142 | Int J Biol Macromol | WB |

Storage

Storage:

Store at -20°C. Stable for one year after shipment.

Storage Buffer:

PBS with 0.02% sodium azide and 50% glycerol pH 7.3.

Aliquoting is unnecessary for -20°C storage

For technical support and original validation data for this product please contact:

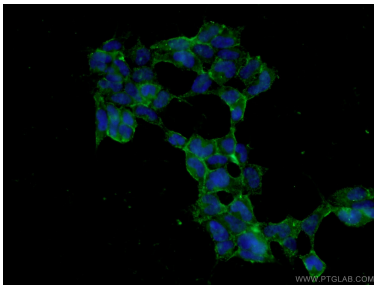
T: 4006900926

E: Proteintech-CN@ptglab.com

W: ptgcn.com

This product is exclusively available under Proteintech Group brand and is not available to purchase from any other manufacturer.

Selected Validation Data



Immunofluorescent analysis of (4% PFA) fixed HEK-293 cells using 27347-1-AP (HEK 293 cells antibody) at dilution of 1:1000 and Alexa Fluor 488-conjugated AffiniPure Goat Anti-Rabbit IgG(H+L).