

# NSD1 Polyclonal antibody

Catalog Number: 27346-1-AP

## Basic Information

**Catalog Number:**

27346-1-AP

**Size:**

850 µg/ml

**Source:**

Rabbit

**Isotype:**

IgG

**Immunogen Catalog Number:**

AG26425

**GenBank Accession Number:**

BC150628

**GeneID (NCBI):**

64324

**UNIPROT ID:**

Q96L73

**Full Name:**

nuclear receptor binding SET domain  
protein 1

**Observed MW:**

267-310 kDa

**Purification Method:**

Antigen affinity purification

**Recommended Dilutions:**

WB 1:1000-1:4000

## Applications

**Tested Applications:**

WB, ELISA

**Species Specificity:**

human

**Positive Controls:**

WB : HEK-293 cells,

## Background Information

NSD1 (nuclear receptor SET (su(var)3-9, enhancer-of-zeste, trithorax) domain containing protein-1), which is isolated and characterized in 2001, belongs to the NSD protein lysine methyltransferase (KMT) family. This family has three members, NSD1 (KMT3B), NSD2 (WHSC1/MMSET) and NSD3 (WHSC1L1), which could regulate the expression of target genes through methylation of lysine 36 on histone H3 (H3K36). NSD1 could bind various promoter elements to regulate transcription via interactions with H3K36 methylation and RNA polymerase II.

## Storage

**Storage:**

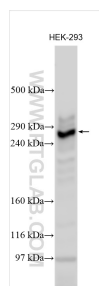
Store at -20°C. Stable for one year after shipment.

**Storage Buffer:**

PBS with 0.02% sodium azide and 50% glycerol pH 7.3.

Aliquoting is unnecessary for -20°C storage

## Selected Validation Data



HEK-293 cells were subjected to SDS PAGE followed by western blot with 27346-1-AP (NSD1 antibody) at dilution of 1:2000 incubated at room temperature for 1.5 hours.