

# SOCS6 Polyclonal antibody

Catalog Number: 27343-1-AP

## Basic Information

**Catalog Number:**

27343-1-AP

**Concentration:**

550 ug/ml

**Source:**

Rabbit

**Isotype:**

IgG

**Immunogen Catalog Number:**

AG25594

**GenBank Accession Number:**

BC020082

**GeneID (NCBI):**

9306

**UNIPROT ID:**

O14544

**Full Name:**

suppressor of cytokine signaling 6

**Calculated MW:**

60 kDa

**Observed MW:**

60-75 kDa

**Purification Method:**

Antigen affinity purification

**Recommended Dilutions:**

WB 1:500-1:3000

IP 0.5-4.0 ug for 1.0-3.0 mg of total protein lysate

IHC 1:50-1:500

## Applications

**Tested Applications:**

WB, IHC, IP, ELISA

**Species Specificity:**

human, mouse

**Note-IHC: suggested antigen retrieval with TE buffer pH 9.0; (\*) Alternatively, antigen retrieval may be performed with citrate buffer pH 6.0**

**Positive Controls:**

**WB :** A549 cells, Calu-1 cells, NIH/3T3 cells, human placenta tissue

**IP :** human placenta tissue,

**IHC :** human colon tissue, mouse colon tissue

## Background Information

SOCS6 (Suppressor of cytokine signaling 6) is also named as CIS4 and SOCS4. SOCS6 is one of eight members of the SOCS family of proteins. SOCS6 is involved in negative regulation of receptor signaling by increasing degradation mediated by ubiquitination of receptors or substrate proteins and induces apoptosis by targeting mitochondrial proteins (PMID: 25172101). SOCS6 is widely expressed in many tissues and is found to be downregulated in many cancers including colorectal cancer, gastric cancer, lung cancer, ovarian cancer, stomach cancer, thyroid cancer, hepatocellular carcinoma, and pancreatic cancer (PMID: 25172101). In addition to its molecular weight of 60 kDa, SOCS6 has a 70 kDa isoform (PMID: 34169835, PMID: 22125600).

## Storage

**Storage:**

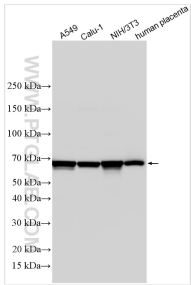
Store at -20°C. Stable for one year after shipment.

**Storage Buffer:**

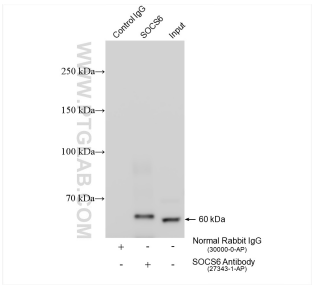
PBS with 0.02% sodium azide and 50% glycerol, pH7.3

**Aliquoting is unnecessary for -20°C storage**

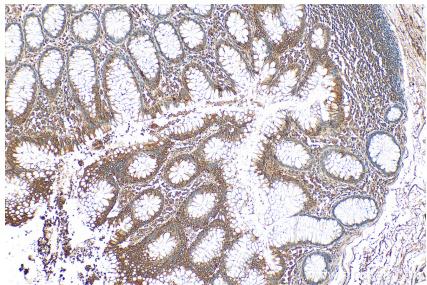
Selected Validation Data



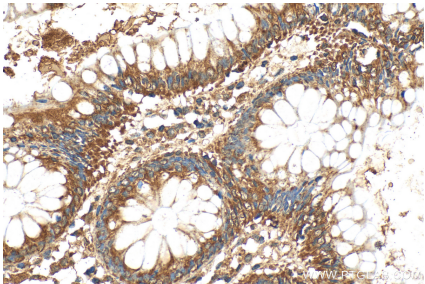
Various lysates were subjected to SDS PAGE followed by western blot with 27343-1-AP (SOCS6 antibody) at dilution of 1:1500 incubated at room temperature for 1.5 hours.



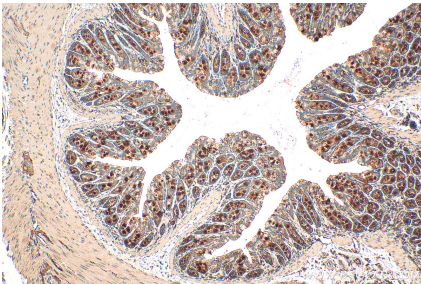
IP result of anti-SOCS6 (IP:27343-1-AP, 4ug; Detection:27343-1-AP 1:500) with human placenta tissue lysate 1160 ug.



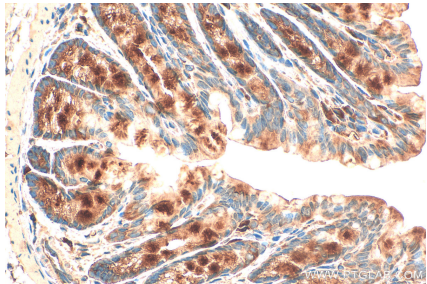
Immunohistochemical analysis of paraffin-embedded human colon tissue slide using 27343-1-AP (SOCS6 antibody) at dilution of 1:200 (under 10x lens). Heat mediated antigen retrieval with Tris-EDTA buffer (pH 9.0).



Immunohistochemical analysis of paraffin-embedded human colon tissue slide using 27343-1-AP (SOCS6 antibody) at dilution of 1:200 (under 40x lens). Heat mediated antigen retrieval with Tris-EDTA buffer (pH 9.0).



Immunohistochemical analysis of paraffin-embedded mouse colon tissue slide using 27343-1-AP (SOCS6 antibody) at dilution of 1:200 (under 10x lens). Heat mediated antigen retrieval with Tris-EDTA buffer (pH 9.0).



Immunohistochemical analysis of paraffin-embedded mouse colon tissue slide using 27343-1-AP (SOCS6 antibody) at dilution of 1:200 (under 40x lens). Heat mediated antigen retrieval with Tris-EDTA buffer (pH 9.0).