

For Research Use Only

Inhibin alpha Polyclonal antibody, PBS Only

Catalog Number: 27331-1-PBS



Basic Information

Catalog Number:

27331-1-PBS

Concentration:

1 mg/ml

Source:

Rabbit

Isotype:

IgG

Immunogen Catalog Number:

AG25999

GenBank Accession Number:

BC006391

GeneID (NCBI):

3623

UNIPROT ID:

P05111

Full Name:

inhibin, alpha

Calculated MW:

40 kDa

Observed MW:

40 kDa

Purification Method:

Antigen affinity purification

Applications

Tested Applications:

WB, IHC, Indirect ELISA

Species Specificity:

human, mouse, rat

Background Information

Inhibin, a heterodimeric member of the TGF family, consists of an alpha (α) subunit (coded by INHA) and a beta (β) subunit, which combine to produce either inhibin A ($\alpha\beta$ A) or inhibin B ($\alpha\beta$ B). Inhibin complexes negatively regulate follicle stimulating hormone secretion from the pituitary gland. Inhibins have also been implicated in regulating numerous cellular processes including cell proliferation, apoptosis, immune response and hormone secretion.

Storage

Storage:

Store at -80°C .

The product is shipped with ice packs. Upon receipt, store it immediately at -80°C

Storage Buffer:

PBS only, pH7.3

For technical support and original validation data for this product please contact:

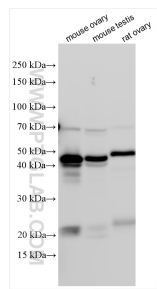
T: 4006900926

E: Proteintech-CN@ptglab.com

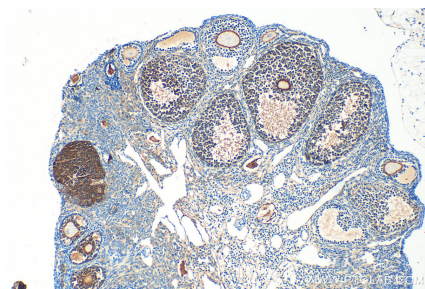
W: ptgcn.com

This product is exclusively available under Proteintech Group brand and is not available to purchase from any other manufacturer.

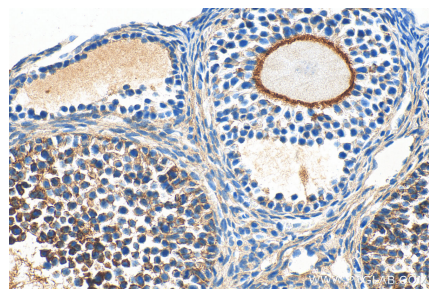
Selected Validation Data



Various lysates were subjected to SDS PAGE followed by western blot with 27331-1-AP (Inhibin alpha antibody) at dilution of 1:6000 incubated at room temperature for 1.5 hours. This data was developed using the same antibody clone with 27331-1-PBS in a different storage buffer formulation.



Immunohistochemical analysis of paraffin-embedded mouse ovary tissue slide using 27331-1-AP (Inhibin alpha antibody) at dilution of 1:800 (under 10x lens). Heat mediated antigen retrieval with Tris-EDTA buffer (pH 9.0). This data was developed using the same antibody clone with 27331-1-PBS in a different storage buffer formulation.



Immunohistochemical analysis of paraffin-embedded mouse ovary tissue slide using 27331-1-AP (Inhibin alpha antibody) at dilution of 1:800 (under 40x lens). Heat mediated antigen retrieval with Tris-EDTA buffer (pH 9.0). This data was developed using the same antibody clone with 27331-1-PBS in a different storage buffer formulation.