

For Research Use Only

PPP1R3B Polyclonal antibody

Catalog Number: 27285-1-AP



Basic Information

Catalog Number:

27285-1-AP

Size:

300 ug/ml

Source:

Rabbit

Isotype:

IgG

Immunogen Catalog Number:

AG26025

GenBank Accession Number:

BC043388

GeneID (NCBI):

79660

UNIPROT ID:

Q86XI6

Full Name:

protein phosphatase 1, regulatory
(inhibitor) subunit 3B

Calculated MW:

33 kDa

Observed MW:

33 kDa

Purification Method:

Antigen affinity purification

Recommended Dilutions:

WB 1:500-1:2000

IHC 1:50-1:500

Applications

Tested Applications:

WB, IHC, ELISA

Species Specificity:

human, mouse

**Note-IHC: suggested antigen retrieval with
TE buffer pH 9.0; (*) Alternatively, antigen
retrieval may be performed with citrate
buffer pH 6.0**

Positive Controls:

WB : mouse heart tissue, MDA-MB-453s cells

IHC : human intrahepatic cholangiocarcinoma tissue,

Background Information

PPP1R3B, also known as Protein Phosphatase 1, Regulatory Subunit 3B, is a protein encoded by the PPP1R3B gene in humans. It is a regulatory subunit of the serine/threonine-specific protein phosphatase 1 (PP1), an enzyme that plays a crucial role in the control of a wide range of cellular processes by dephosphorylating target proteins.

Storage

Storage:

Store at -20°C. Stable for one year after shipment.

Storage Buffer:

PBS with 0.02% sodium azide and 50% glycerol pH 7.3.

Aliquoting is unnecessary for -20°C storage

For technical support and original validation data for this product please contact:

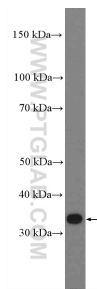
T: 4006900926

E: Proteintech-CN@ptglab.com

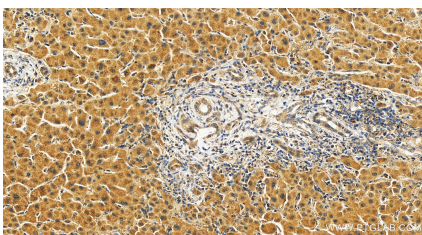
W: ptgcn.com

This product is exclusively available under Proteintech Group brand and is not available to purchase from any other manufacturer.

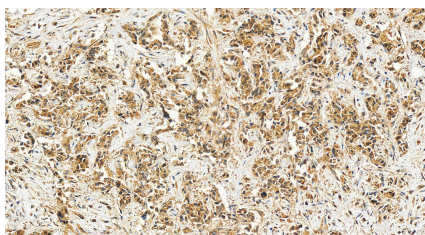
Selected Validation Data



mouse heart tissue were subjected to SDS PAGE followed by western blot with 27285-1-AP (PPP1R3B Antibody) at dilution of 1:1000 incubated at room temperature for 1.5 hours.



Immunohistochemical analysis of paraffin-embedded human intrahepatic cholangiocarcinoma tissue slide using 27285-1-AP (PPP1R3B antibody) at dilution of 1:200 (under 20x lens). Heat mediated antigen retrieval with Tris-EDTA buffer (pH 9.0).



Immunohistochemical analysis of paraffin-embedded human intrahepatic cholangiocarcinoma tissue slide using 27285-1-AP (PPP1R3B antibody) at dilution of 1:200 (under 20x lens). Heat mediated antigen retrieval with Tris-EDTA buffer (pH 9.0).