

For Research Use Only

JAK1 Polyclonal antibody

Catalog Number: 27284-1-AP

1 Publications



Basic Information

Catalog Number:

27284-1-AP

Concentration:

850 µg/ml

Source:

Rabbit

Isotype:

IgG

Immunogen Catalog Number:

AG25579

GenBank Accession Number:

BC132729

GeneID (NCBI):

3716

UNIPROT ID:

P23458

Full Name:

Janus kinase 1 (a protein tyrosine kinase)

Calculated MW:

1154 aa, 133 kDa

Observed MW:

125-133 kDa

Purification Method:

Antigen affinity purification

Recommended Dilutions:

WB 1:500-1:2000

Applications

Tested Applications:

WB, ELISA

Cited Applications:

WB

Species Specificity:

human, mouse, rat

Cited Species:

human

Positive Controls:

WB: Daudi cells, J774A.1 cells, RAW 264.7 cells, mouse lung tissue, rat lung tissue

Background Information

Janus kinase 1 (JAK1), is a member of a class of protein-tyrosine kinases (PTK) characterized by the presence of a second phosphotransferase-related domain immediately N-terminal to the PTK domain. JAK1 is essential for signaling for certain type I and type II cytokines. JAK1 plays a critical role in initiating responses to multiple major cytokine receptor families. Expression of JAK1 in cancer cells enables individual cells to contract, potentially allowing them to escape their tumor and metastasize to other parts of the body.

Notable Publications

Author	Pubmed ID	Journal	Application
Yong Jiang	36647631	Eur J Histochem	WB

Storage

Storage:

Store at -20°C. Stable for one year after shipment.

Storage Buffer:

PBS with 0.02% sodium azide and 50% glycerol, pH7.3

Aliquoting is unnecessary for -20°C storage

For technical support and original validation data for this product please contact:

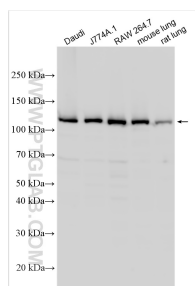
T: 4006900926

E: Proteintech-CN@ptglab.com

W: ptgcn.com

This product is exclusively available under Proteintech Group brand and is not available to purchase from any other manufacturer.

Selected Validation Data



Various lysates were subjected to SDS PAGE followed by western blot with 27284-1-AP (JAK1 antibody) at dilution of 1:1000 incubated at room temperature for 1.5 hours.