

For Research Use Only

KIF21A Polyclonal antibody, PBS Only

Catalog Number: 27276-1-PBS



Basic Information

Catalog Number:

27276-1-PBS

Size:

1 mg/ml

Source:

Rabbit

Isotype:

IgG

Immunogen Catalog Number:

AG26192

GenBank Accession Number:

NM_001173463

GeneID (NCBI):

55605

Full Name:

kinesin family member 21A

Calculated MW:

187 kDa

Observed MW:

190-200 kDa

Purification Method:

Antigen affinity purification

Applications

Tested Applications:

WB, IHC, IP, Indirect ELISA

Species Specificity:

human, mouse

Background Information

KIF21A is well known for its association with congenital fibrosis of the extraocular muscles type 1 (CFEOM1). CFEOM1-related mutations in KIF21A relieve autoinhibition of the motor and third coiled-coil stalk, which results in enhanced accumulation of KIF21A in axonal growth cones and aberrant axon morphology in the oculomotor nerve. (PMID: 38767486)

Storage

Storage:

Store at -80°C.

The product is shipped with ice packs. Upon receipt, store it immediately at -80°C

Storage Buffer:

PBS Only

For technical support and original validation data for this product please contact:

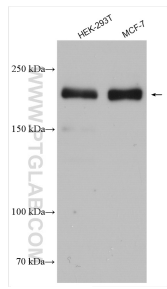
T: 4006900926

E: Proteintech-CN@ptglab.com

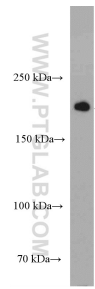
W: ptgcn.com

This product is exclusively available under Proteintech Group brand and is not available to purchase from any other manufacturer.

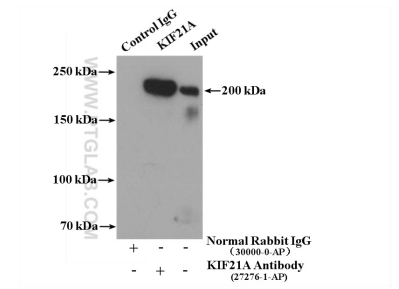
Selected Validation Data



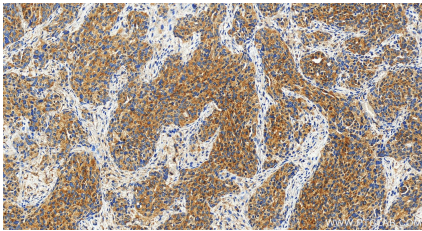
Various lysates were subjected to SDS PAGE followed by western blot with 27276-1-AP (KIF21A antibody) at dilution of 1:1500 incubated at room temperature for 1.5 hours. This data was developed using the same antibody clone with 27276-1-PBS in a different storage buffer formulation.



mouse brain tissue were subjected to SDS PAGE followed by western blot with 27276-1-AP (KIF21A Antibody) at dilution of 1:600 incubated at room temperature for 1.5 hours. This data was developed using the same antibody clone with 27276-1-PBS in a different storage buffer formulation.



IP result of anti-KIF21A (IP:27276-1-AP, 4ug; Detection:27276-1-AP 1:500) with mouse brain tissue lysate 5600ug. This data was developed using the same antibody clone with 27276-1-PBS in a different storage buffer formulation.



Immunohistochemical analysis of paraffin-embedded human ovary cancer tissue slide using 27276-1-AP (KIF21A antibody) at dilution of 1:200 (under 20x lens). Heat mediated antigen retrieval with Tris-EDTA buffer (pH 9.0). This data was developed using the same antibody clone with 27276-1-PBS in a different storage buffer formulation.