

For Research Use Only

KIF21A Polyclonal antibody

Catalog Number: 27276-1-AP



Basic Information

Catalog Number:

27276-1-AP

Size:

1500 µg/ml

Source:

Rabbit

Isotype:

IgG

Immunogen Catalog Number:

AG26192

GenBank Accession Number:

NM_001173463

GeneID (NCBI):

55605

Full Name:

kinesin family member 21A

Calculated MW:

187 kDa

Observed MW:

190-200 kDa

Purification Method:

Antigen affinity purification

Recommended Dilutions:

WB 1:500-1:3000

IP 0.5-4.0 µg for 1.0-3.0 mg of total protein lysate

Applications

Tested Applications:

IP, WB, ELISA

Species Specificity:

human, mouse

Positive Controls:

WB: HEK-293T cells, mouse brain tissue, MCF-7

IP: mouse brain tissue,

Background Information

Storage

Storage:

Store at -20°C. Stable for one year after shipment.

Storage Buffer:

PBS with 0.02% sodium azide and 50% glycerol pH 7.3.

Aliquoting is unnecessary for -20°C storage

For technical support and original validation data for this product please contact:

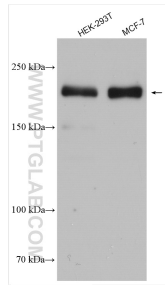
T: 4006900926

E: Proteintech-CN@ptglab.com

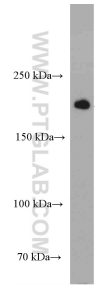
W: ptgcn.com

This product is exclusively available under Proteintech Group brand and is not available to purchase from any other manufacturer.

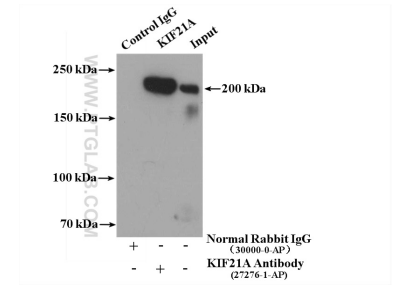
Selected Validation Data



Various lysates were subjected to SDS PAGE followed by western blot with 27276-1-AP (KIF21A antibody) at dilution of 1:1500 incubated at room temperature for 1.5 hours.



mouse brain tissue were subjected to SDS PAGE followed by western blot with 27276-1-AP (KIF21A Antibody) at dilution of 1:600 incubated at room temperature for 1.5 hours.



IP result of anti-KIF21A (IP:27276-1-AP, 4ug; Detection:27276-1-AP 1:500) with mouse brain tissue lysate 5600ug.