

For Research Use Only

# KMT2D Polyclonal antibody

Catalog Number: 27266-1-AP

Featured Product

12 Publications



## Basic Information

### Catalog Number:

27266-1-AP

### Size:

900 ug/ml

### Source:

Rabbit

### Isotype:

IgG

### Immunogen Catalog Number:

AG26195

### GenBank Accession Number:

NM\_003482

### GeneID (NCBI):

8085

### UNIPROT ID:

O14686

### Full Name:

myeloid/lymphoid or mixed-lineage leukemia 2

### Calculated MW:

593 kDa

### Observed MW:

593 kDa

### Purification Method:

Antigen affinity purification

### Recommended Dilutions:

WB 1:2000-1:16000

IHC 1:50-1:500

## Applications

### Tested Applications:

WB, IHC, ELISA

### Cited Applications:

WB, IHC, IF, ChIP

### Species Specificity:

human

### Cited Species:

human, mouse

### Positive Controls:

WB : HEK-293 cells,

IHC : human breast cancer tissue, human lymphoma tissue, human colon cancer tissue

**Note-IHC: suggested antigen retrieval with TE buffer pH 9.0; (\*) Alternatively, antigen retrieval may be performed with citrate buffer pH 6.0**

## Background Information

KMT2D (a COMPASS/ Set1 family member; also known as MLL4, ALR, and MLL2) is the biggest H3K4 methyltransferase among the most frequently mutated genes in many different types of cancer (PMID: 34194626). The enzymatic function of KMT2D depends on a cluster of C-terminal conserved domains, including a PHD domain, two FY-rich motifs (FYRC and FYRN) and a catalytic SET domain. KMT2D has two frequently occurring genomic alterations: truncation and missense mutations. Loss of KMT2D is a bona fide tumor suppressor gene in FL and DLBCL. Kmt2d perturbed the expression of genes that sustain proliferation and survival, and the KMT2D protein directly binds and associates with an active chromatin conformation in negative modulators of the BCR and lymphocyte migration pathways, which in turn could affect B cell responses to antigen (PMID: 26366712).

## Notable Publications

Author	Pubmed ID	Journal	Application
Xuejiao Leng	32879445	Oncogene	IHC
Ning Jiang	33200540	Thorac Cancer	IHC
Qianshuo Liu	34127651	Cell Death Discov	ChIP

## Storage

### Storage:

Store at -20°C. Stable for one year after shipment.

### Storage Buffer:

PBS with 0.02% sodium azide and 50% glycerol pH 7.3.

Aliquoting is unnecessary for -20°C storage

For technical support and original validation data for this product please contact:

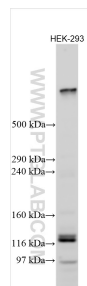
T: 4006900926

E: [Proteintech-CN@ptglab.com](mailto:Proteintech-CN@ptglab.com)

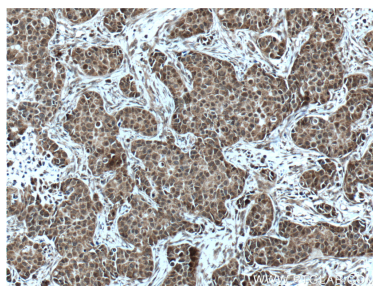
W: [ptgcn.com](http://ptgcn.com)

**This product is exclusively available under Proteintech Group brand and is not available to purchase from any other manufacturer.**

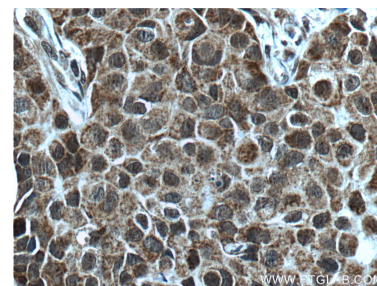
## Selected Validation Data



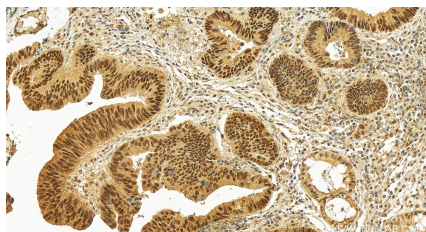
Various lysates were subjected to SDS PAGE followed by western blot with 27266-1-AP (KMT2D antibody) at dilution of 1:8000 incubated at room temperature for 1.5 hours.



Immunohistochemical analysis of paraffin-embedded human breast cancer tissue slide using 27266-1-AP (KMT2D Antibody) at dilution of 1:200 (under 10x lens). Heat mediated antigen retrieval with Tris-EDTA buffer (pH 9.0).



Immunohistochemical analysis of paraffin-embedded human breast cancer tissue slide using 27266-1-AP (KMT2D Antibody) at dilution of 1:200 (under 40x lens). Heat mediated antigen retrieval with Tris-EDTA buffer (pH 9.0).



Immunohistochemical analysis of paraffin-embedded human colon cancer tissue slide using 27266-1-AP (KMT2D antibody) at dilution of 1:1200 (under 20x lens). Heat mediated antigen retrieval with Tris-EDTA buffer (pH 9.0).