

For Research Use Only

# EPDR1 Polyclonal antibody, PBS Only

Catalog Number: 27252-1-PBS



## Basic Information

Catalog Number:

27252-1-PBS

Concentration:

1 mg/ml

Source:

Rabbit

Isotype:

IgG

Immunogen Catalog Number:

AG26120

GenBank Accession Number:

BC018299

GeneID (NCBI):

54749

UNIPROT ID:

Q9UM22

Full Name:

Mammalian ependymin-related protein 1

Calculated MW:

25 kDa

Observed MW:

25-30 kDa

Purification Method:

Antigen affinity purification

## Applications

Tested Applications:

WB, IHC, Indirect ELISA

Species Specificity:

human, mouse, rat

## Background Information

The ependymin-related 1 (EPDR1) gene, also known as MERP1 and UCC1, encodes for a protein related to ependymins, which are type II transmembrane proteins that are similar to two families of cell adhesion molecules: the protocadherins and ependymins. Ependymin-related protein 1 (EPDR1) was recently identified as a secreted human batokine regulating mitochondrial respiration linked to thermogenesis in brown fat. Proteomics studies of mammalian mannose-6-phosphate (M6P) glycoproteins have identified EPDR1 as a lysosomal protein with unknown function. The lysosomal localization of EPDR1 was further demonstrated in mouse brain homogenates by subcellular fractionation. (PMID: 36343918, PMID: 33902536, PMID: 30729188)

## Storage

Storage:

Store at -80°C.

The product is shipped with ice packs. Upon receipt, store it immediately at -80°C

Storage Buffer:

PBS only, pH7.3

For technical support and original validation data for this product please contact:

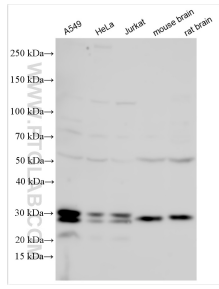
T: 4006900926

E: [Proteintech-CN@ptglab.com](mailto:Proteintech-CN@ptglab.com)

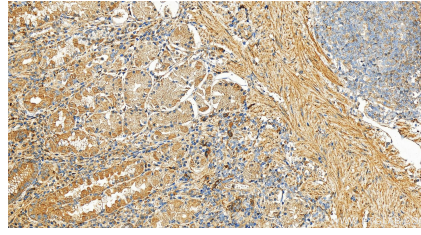
W: [ptgcn.com](http://ptgcn.com)

This product is exclusively available under Proteintech Group brand and is not available to purchase from any other manufacturer.

## Selected Validation Data



Various lysates were subjected to SDS PAGE followed by western blot with 27252-1-AP (EPDR1 antibody) at dilution of 1:8000 incubated at room temperature for 1.5 hours. This data was developed using the same antibody clone with 27252-1-PBS in a different storage buffer formulation.



Immunohistochemical analysis of paraffin-embedded human stomach tissue slide using 27252-1-AP (EPDR1 antibody) at dilution of 1:2000 (under 20x lens). Heat mediated antigen retrieval with Tris-EDTA buffer (pH 9.0). This data was developed using the same antibody clone with 27252-1-PBS in a different storage buffer formulation.