

For Research Use Only

# EPDR1 Polyclonal antibody

Catalog Number: 27252-1-AP

2 Publications



## Basic Information

Catalog Number:

27252-1-AP

Concentration:

550 ug/ml

Source:

Rabbit

Isotype:

IgG

Immunogen Catalog Number:

AG26120

GenBank Accession Number:

BC018299

GeneID (NCBI):

54749

UNIPROT ID:

Q9UM22

Full Name:

Mammalian ependymin-related protein 1

Calculated MW:

25 kDa

Observed MW:

25-30 kDa

Purification Method:

Antigen affinity purification

Recommended Dilutions:

WB 1:2000-1:16000

IHC 1:1000-1:4000

## Applications

Tested Applications:

WB, IHC, ELISA

Cited Applications:

WB

Species Specificity:

human, mouse, rat

Cited Species:

human

**Note-IHC: suggested antigen retrieval with TE buffer pH 9.0; (\*) Alternatively, antigen retrieval may be performed with citrate buffer pH 6.0**

Positive Controls:

WB : A549 cells, HeLa cells, Jurkat cells, mouse brain tissue, rat brain tissue

IHC : human stomach tissue,

## Background Information

The ependymin-related 1 (EPDR1) gene, also known as MERP1 and UCC1, encodes for a protein related to ependymins, which are type II transmembrane proteins that are similar to two families of cell adhesion molecules: the protocadherins and ependymins. Ependymin-related protein 1 (EPDR1) was recently identified as a secreted human batokine regulating mitochondrial respiration linked to thermogenesis in brown fat. Proteomics studies of mammalian mannose-6-phosphate (M6P) glycoproteins have identified EPDR1 as a lysosomal protein with unknown function. The lysosomal localization of EPDR1 was further demonstrated in mouse brain homogenates by subcellular fractionation.(PMID: 36343918, PMID: 33902536, PMID: 30729188)

## Notable Publications

Author	Pubmed ID	Journal	Application
Xiuqing Liang	33165408	Int J Clin Exp Pathol	WB
Wenyang Li	39104482	Heliyon	WB

## Storage

Storage:

Store at -20°C. Stable for one year after shipment.

Storage Buffer:

PBS with 0.02% sodium azide and 50% glycerol, pH7.3

Aliquoting is unnecessary for -20°C storage

For technical support and original validation data for this product please contact:

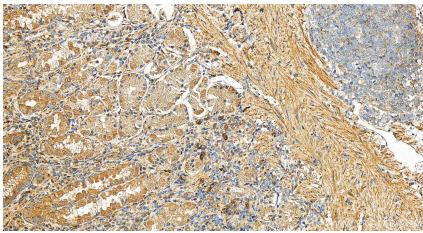
T: 4006900926

E: Proteintech-CN@ptglab.com

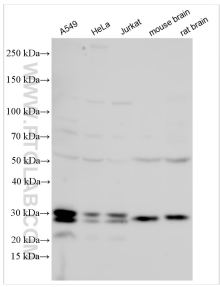
W: ptgcn.com

**This product is exclusively available under Proteintech Group brand and is not available to purchase from any other manufacturer.**

## Selected Validation Data



Immunohistochemical analysis of paraffin-embedded human stomach tissue slide using 27252-1-AP (EPDR1 antibody) at dilution of 1:2000 (under 20x lens). Heat mediated antigen retrieval with Tris-EDTA buffer (pH 9.0).



Various lysates were subjected to SDS PAGE followed by western blot with 27252-1-AP (EPDR1 antibody) at dilution of 1:8000 incubated at room temperature for 1.5 hours.