

# RBL2 Polyclonal antibody

Catalog Number: 27251-1-AP

Featured Product

5 Publications

## Basic Information

**Catalog Number:**

27251-1-AP

**Size:**

800 µg/ml

**Source:**

Rabbit

**Isotype:**

IgG

**Immunogen Catalog Number:**

AG25087

**GenBank Accession Number:**

BC034490

**GeneID (NCBI):**

5934

**UNIPROT ID:**

Q08999

**Full Name:**

retinoblastoma-like 2 (p130)

**Calculated MW:**

130 kDa

**Observed MW:**

128 kDa

**Purification Method:**

Antigen affinity purification

**Recommended Dilutions:**

WB 1:500-1:1000

## Applications

**Tested Applications:**

WB, ELISA

**Cited Applications:**

WB

**Species Specificity:**

human

**Cited Species:**

human, mouse

**Positive Controls:**

WB : A549 cells, Raji cells

## Background Information

RBL2, also named as Retinoblastoma-like protein 2 or p130, is a 1130 amino acid protein, which belongs to the retinoblastoma protein (RB) family. RBL2 is a Key regulator of entry into cell division and is directly involved in heterochromatin formation by maintaining overall chromatin structure and, in particular, that of constitutive heterochromatin by stabilizing histone methylation. RBL2 recruits and targets histone methyltransferases KMT5B and KMT5C, leading to epigenetic transcriptional repression and controls histone H4 'Lys-20' trimethylation. RBL2 probably acts as a transcription repressor by recruiting chromatin-modifying enzymes to promoters. RBL2 may act as a tumor suppressor.

## Notable Publications

Author	Pubmed ID	Journal	Application
Xiaoman Chen	30207732	Mol Pharm	WB
Ji Young Kim	32229099	Biochem Pharmacol	WB
Ji Che	33887345	Life Sci	WB

## Storage

**Storage:**

Store at -20°C. Stable for one year after shipment.

**Storage Buffer:**

PBS with 0.02% sodium azide and 50% glycerol pH 7.3.

Aliquoting is unnecessary for -20°C storage

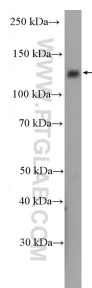
For technical support and original validation data for this product please contact:

T: 4006900926

E: [Proteintech-CN@ptglab.com](mailto:Proteintech-CN@ptglab.com)W: [ptgcn.com](http://ptgcn.com)

This product is exclusively available under Proteintech Group brand and is not available to purchase from any other manufacturer.

## Selected Validation Data



A549 cells were subjected to SDS PAGE followed by western blot with 27251-1-AP (RBL2 Antibody) at dilution of 1:600 incubated at room temperature for 1.5 hours.