

For Research Use Only

DLEU7 Polyclonal antibody, PBS Only

Catalog Number: 27250-1-PBS



Basic Information

Catalog Number:

27250-1-PBS

Source:

Rabbit

Isotype:

IgG

Immunogen Catalog Number:

AG24414

GenBank Accession Number:

BC104892

GeneID (NCBI):

220107

UNIPROT ID:

Q6UYE1

Full Name:

deleted in lymphocytic leukemia, 7

Calculated MW:

221aa, 24 kDa; 160aa, 17 kDa

Observed MW:

17-24 kDa

Purification Method:

Antigen affinity purification

Applications

Tested Applications:

WB, Indirect ELISA

Species Specificity:

human, mouse, rat

Background Information

DLEU7 (Deleted in Lymphocytic Leukemia 7) is a tumor suppressor protein, frequently inactivated in B-cell chronic lymphocytic leukemia (CLL). This 221-amino-acid protein functions as a critical negative regulator of NF- κ B signaling by directly inhibiting TACI and BCMA, key transducers of B-cell proliferative signals. Through this mechanism, DLEU7 suppresses cell proliferation and induces apoptosis. DLEU7 represents a potential therapeutic target in CLL and other B-cell malignancies (PMID: 34277865; 35892027).

Storage

Storage:

Store at -80°C.

The product is shipped with ice packs. Upon receipt, store it immediately at -80°C

Storage Buffer:

PBS only, pH7.3

For technical support and original validation data for this product please contact:

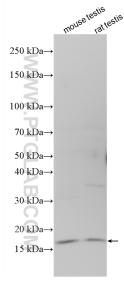
T: 4006900926

E: Proteintech-CN@ptglab.com

W: ptgcn.com

This product is exclusively available under Proteintech Group brand and is not available to purchase from any other manufacturer.

Selected Validation Data



Various lysates were subjected to SDS PAGE followed by western blot with 27250-1-AP (DLEU7 antibody) at dilution of 1:500 incubated at room temperature for 1.5 hours. This data was developed using the same antibody clone with 27250-1-PBS in a different storage buffer formulation.