

For Research Use Only

DLEU7 Polyclonal antibody

Catalog Number: 27250-1-AP



Basic Information

Catalog Number:

27250-1-AP

Source:

Rabbit

Isotype:

IgG

Immunogen Catalog Number:

AG24414

GenBank Accession Number:

BC104892

GeneID (NCBI):

220107

UNIPROT ID:

Q6UYE1

Full Name:

deleted in lymphocytic leukemia, 7

Calculated MW:

221aa, 24 kDa; 160aa, 17 kDa

Observed MW:

17-24 kDa

Purification Method:

Antigen affinity purification

Recommended Dilutions:

WB: 1:500-1:1000

Applications

Tested Applications:

WB, ELISA

Species Specificity:

human, mouse, rat

Positive Controls:

WB : mouse testis tissue, rat testis tissue

Background Information

DLEU7 (Deleted in Lymphocytic Leukemia 7) is a tumor suppressor protein, frequently inactivated in B-cell chronic lymphocytic leukemia (CLL). This 221-amino-acid protein functions as a critical negative regulator of NF- κ B signaling by directly inhibiting TACI and BCMA, key transducers of B-cell proliferative signals. Through this mechanism, DLEU7 suppresses cell proliferation and induces apoptosis. DLEU7 represents a potential therapeutic target in CLL and other B-cell malignancies (PMID: 34277865; 35892027).

Storage

Storage:

Store at -20°C. Stable for one year after shipment.

Storage Buffer:

PBS with 0.02% sodium azide and 50% glycerol, pH7.3

Aliquoting is unnecessary for -20°C storage

For technical support and original validation data for this product please contact:

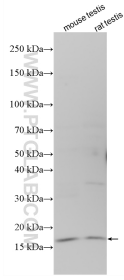
T: 4006900926

E: Proteintech-CN@ptglab.com

W: ptgcn.com

This product is exclusively available under Proteintech Group brand and is not available to purchase from any other manufacturer.

Selected Validation Data



Various lysates were subjected to SDS PAGE followed by western blot with 27250-1-AP (DLEU7 antibody) at dilution of 1:500 incubated at room temperature for 1.5 hours.