

For Research Use Only

Cyclin A2 Polyclonal antibody

Catalog Number: 27242-1-AP

Featured Product

5 Publications



Basic Information

Catalog Number:

27242-1-AP

Size:

550 µg/ml

Source:

Rabbit

Isotype:

IgG

Immunogen Catalog Number:

AG25666

GenBank Accession Number:

BC104783

GeneID (NCBI):

890

UNIPROT ID:

P20248

Full Name:

cyclin A2

Calculated MW:

432 aa, 49 kDa

Observed MW:

49 kDa

Purification Method:

Antigen affinity purification

Recommended Dilutions:

WB 1:500-1:2000

Applications

Tested Applications:

WB, ELISA

Cited Applications:

WB

Species Specificity:

human

Cited Species:

human

Positive Controls:

WB : HEK-293 cells, HeLa cells, U2OS cells, Jurkat cells

Background Information

Notable Publications

| Author | Pubmed ID | Journal | Application |
|-------------|-----------|---------------|-------------|
| Wushuang Du | 33931924 | Cancer Sci | WB |
| Jie Yang | 30872078 | Cancer Lett | WB |
| Yuqi Zhou | 33576447 | Int J Mol Med | WB |

Storage

Storage:

Store at -20°C. Stable for one year after shipment.

Storage Buffer:

PBS with 0.02% sodium azide and 50% glycerol pH 7.3.

Aliquoting is unnecessary for -20°C storage

For technical support and original validation data for this product please contact:

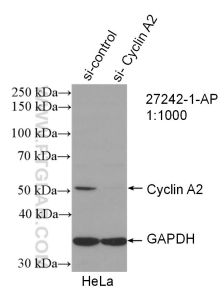
T: 4006900926

E: Proteintech-CN@ptglab.com

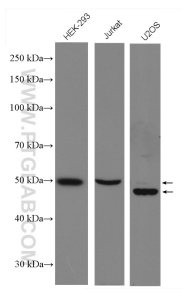
W: ptgcn.com

This product is exclusively available under Proteintech Group brand and is not available to purchase from any other manufacturer.

Selected Validation Data



WB result of Cyclin A2 antibody (27242-1-AP; 1:1000; incubated at room temperature for 1.5 hours) with sh-Control and sh-Cyclin A2 transfected HeLa cells.



Various lysates were subjected to SDS PAGE followed by western blot with 27242-1-AP (Cyclin A2 antibody) at dilution of 1:1000 incubated at room temperature for 1.5 hours.