

For Research Use Only

ELMO2 Polyclonal antibody

Catalog Number: 27223-1-AP



Basic Information

Catalog Number:

27223-1-AP

Concentration:

500 ug/ml

Source:

Rabbit

Isotype:

IgG

Immunogen Catalog Number:

AG25832

GenBank Accession Number:

BC000143

GeneID (NCBI):

63916

UNIPROT ID:

Q96JJ3

Full Name:

engulfment and cell motility 2

Calculated MW:

80 kDa

Observed MW:

83 kDa

Purification Method:

Antigen affinity purification

Recommended Dilutions:

IP 0.5-4.0 ug for 1.0-3.0 mg of total protein lysate

Applications

Tested Applications:

IP, ELISA

Species Specificity:

human

Positive Controls:

IP : HEK-293 cells, BT-549 cells

Background Information

ELMO2 (Engulfment and cell motility protein 2), a member of the Elmo protein family, has been implicated in the regulation of Rac1 and Akt activation. ELMO2 is recruited to the plasma membrane and involved in the signaling cascade that controls cytoskeleton dynamics and cell migration (PMID: 27226625). ELMO2 is a cytoskeletal adaptor protein necessary for cell migration and apoptotic cell removal. Loss-of-function mutations in ELMO2, via impaired RAC1 signaling and defective vascular smooth muscles, as the causative factor for autosomal-recessive VMOS (PMID: 27476657).

Storage

Storage:

Store at -20°C. Stable for one year after shipment.

Storage Buffer:

PBS with 0.02% sodium azide and 50% glycerol, pH7.3

Aliquoting is unnecessary for -20°C storage

For technical support and original validation data for this product please contact:

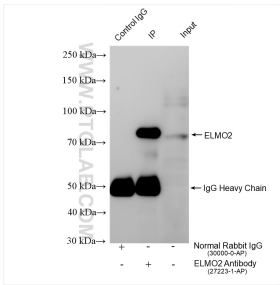
T: 4006900926

E: Proteintech-CN@ptglab.com

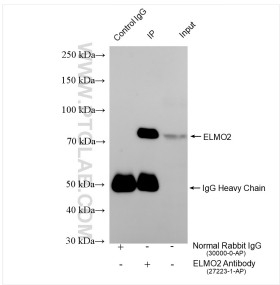
W: ptgcn.com

This product is exclusively available under Proteintech Group brand and is not available to purchase from any other manufacturer.

Selected Validation Data



IP result of anti-ELMO2 (IP:27223-1-AP, 4ug; Detection:27223-1-AP 1:600) with HEK-293 cells lysate 1440 ug.



IP result of anti-ELMO2 (IP:27223-1-AP, 4ug; Detection:27223-1-AP 1:600) with BT-549 cells lysate 1120 ug.