

For Research Use Only

PIM1 Polyclonal antibody, PBS Only

Catalog Number: 27196-1-PBS



Basic Information

Catalog Number: 27196-1-PBS	GenBank Accession Number: BC020224	Purification Method: Antigen affinity purification
Concentration: 1 mg/ml	GeneID (NCBI): 5292	
Source: Rabbit	UNIPROT ID: P11309	
Isotype: IgG	Full Name: pim-1 oncogene	
Immunogen Catalog Number: AG25743	Calculated MW: 45 kDa	
	Observed MW: 30-40 kDa	

Applications

Tested Applications:
WB, Indirect ELISA

Species Specificity:
human, mouse

Background Information

PIM1 belongs to the Ser/Thr protein kinase family and the Pim subfamily. This family includes PIM1, PIM2, and PIM3, which share high sequence and structural similarity. PIM1 is a serine/threonine protein kinase that significantly promotes cell survival and proliferation, providing a selective advantage for tumorigenesis. PIM1 is expressed primarily in cells of the hematopoietic and germline lineages (PMID: 16186805).

Storage

Storage:
Store at -80°C.
The product is shipped with ice packs. Upon receipt, store it immediately at -80°C

Storage Buffer:
PBS only, pH7.3

For technical support and original validation data for this product please contact:

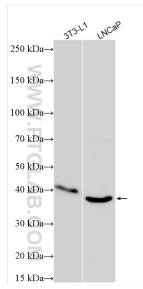
T: 4006900926

E: Proteintech-CN@ptglab.com

W: ptgcn.com

This product is exclusively available under Proteintech Group brand and is not available to purchase from any other manufacturer.

Selected Validation Data



Various lysates were subjected to SDS PAGE followed by western blot with 27196-1-AP (PIM1 antibody) at dilution of 1:800 incubated at room temperature for 1.5 hours. This data was developed using the same antibody clone with 27196-1-PBS in a different storage buffer formulation.