

For Research Use Only

# NHE3 Polyclonal antibody, PBS Only

Catalog Number: 27190-1-PBS



## Basic Information

Catalog Number:

27190-1-PBS

Size:

1 mg/ml

Source:

Rabbit

Isotype:

IgG

Immunogen Catalog Number:

AG25637

GenBank Accession Number:

BC101669

GeneID (NCBI):

6550

UNIPROT ID:

P48764

Full Name:

solute carrier family 9  
(sodium/hydrogen exchanger),  
member 3

Calculated MW:

834 aa, 93 kDa

Observed MW:

80-100 kDa

Purification Method:

Antigen affinity purification

## Applications

Tested Applications:

WB, IHC, IP, Indirect ELISA

Species Specificity:

human, mouse

## Background Information

SLC9A3, also known as NHE3, belongs to the sodium hydrogen exchange protein family (NHE) and is mainly responsible for regulating the concentration of sodium and hydrogen ions inside and outside the cell. SLC9A3 is a Major apical Na<sup>+</sup>/H<sup>+</sup> exchanger in kidney and intestine, playing an important role in renal and intestine Na<sup>+</sup> absorption and blood pressure regulation (PMID:24622516, 2635877). Mutations in SLC9A3 cause Congenital Sodium Diarrhea (PMID: 26358773, 31276831).

## Storage

Storage:

Store at -80°C.

**The product is shipped with ice packs. Upon receipt, store it immediately at -80°C**

Storage Buffer:

PBS Only

For technical support and original validation data for this product please contact:

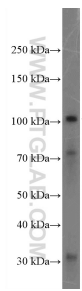
T: 4006900926

E: [Proteintech-CN@ptglab.com](mailto:Proteintech-CN@ptglab.com)

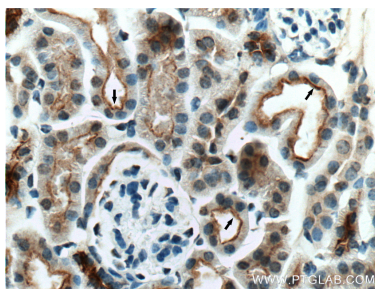
W: [ptgcn.com](http://ptgcn.com)

**This product is exclusively available under Proteintech Group brand and is not available to purchase from any other manufacturer.**

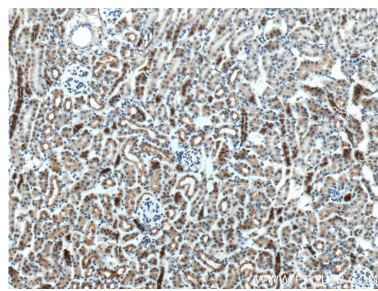
Selected Validation Data



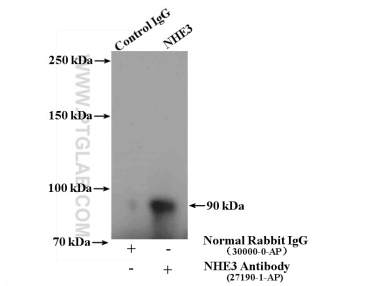
mouse small intestine tissue were subjected to SDS PAGE followed by western blot with 27190-1-AP (NHE3 antibody at dilution of 1:1000 incubated at room temperature for 1.5 hours. This data was developed using the same antibody clone with 27190-1-PBS in a different storage buffer formulation.



Immunohistochemical analysis of paraffin-embedded mouse kidney tissue slide using 27190-1-AP (NHE3 antibody at dilution of 1:200 (under 40x lens). heat mediated antigen retrieved with Tris-EDTA buffer (pH9). Arrows show brush border. This data was developed using the same antibody clone with 27190-1-PBS in a different storage buffer formulation.



Immunohistochemical analysis of paraffin-embedded mouse kidney tissue slide using 27190-1-AP (NHE3 antibody at dilution of 1:200 (under 10x lens). Heat mediated antigen retrieval with Tris-EDTA buffer (pH 9.0). This data was developed using the same antibody clone with 27190-1-PBS in a different storage buffer formulation.



IP result of anti-NHE3 (IP:27190-1-AP, 4ug; Detection:27190-1-AP 1:1000) with mouse kidney tissue lysate 4000ug. This data was developed using the same antibody clone with 27190-1-PBS in a different storage buffer formulation.