

For Research Use Only

NEK1 Polyclonal antibody

Catalog Number: 27146-1-AP

Featured Product

3 Publications



Basic Information

Catalog Number:

27146-1-AP

Size:

850 µg/ml

Source:

Rabbit

Isotype:

IgG

Immunogen Catalog Number:

AG25970

GenBank Accession Number:

BC114491

GeneID (NCBI):

4750

UNIPROT ID:

Q96PY6

Full Name:

NIMA (never in mitosis gene a)-related kinase 1

Calculated MW:

1258 aa, 143 kDa

Observed MW:

170 kDa

Purification Method:

Antigen affinity purification

Recommended Dilutions:

WB 1:500-1:2000

IP 0.5-4.0 µg for 1.0-3.0 mg of total protein lysate

IHC 1:50-1:500

IF/ICC 1:200-1:800

Applications

Tested Applications:

IF/ICC, IHC, IP, WB, ELISA

Cited Applications:

WB, IHC, IP

Species Specificity:

human, rat, mouse

Cited Species:

human

Note-IHC: suggested antigen retrieval with TE buffer pH 9.0; (*) Alternatively, antigen retrieval may be performed with citrate buffer pH 6.0

Positive Controls:

WB: PC-12 cells, mouse pancreas tissue, HeLa cells

IP: PC-12 cells, HeLa cells

IHC: human lung cancer tissue,

IF/ICC: HeLa cells,

Background Information

Notable Publications

Author	Pubmed ID	Journal	Application
Kang Qian	39073752	Adv Sci (Weinh)	WB
Lei Chen	37835513	Cancers (Basel)	WB, IHC
Mateusz Gregorczyk	37188479	Life Sci Alliance	WB, IP

Storage

Storage:

Store at -20°C. Stable for one year after shipment.

Storage Buffer:

PBS with 0.02% sodium azide and 50% glycerol pH 7.3.

Aliquoting is unnecessary for -20°C storage

For technical support and original validation data for this product please contact:

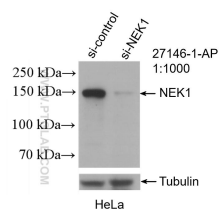
T: 4006900926

E: Proteintech-CN@ptglab.com

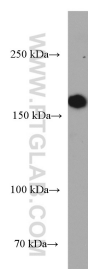
W: ptgcn.com

This product is exclusively available under Proteintech Group brand and is not available to purchase from any other manufacturer.

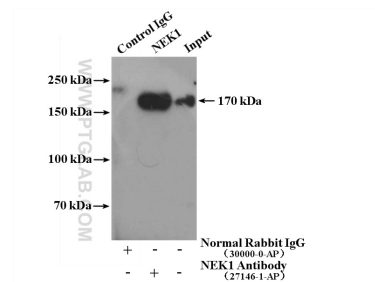
Selected Validation Data



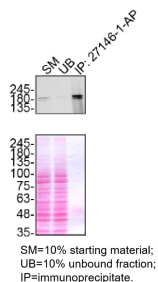
WB result of NEK1 antibody (27146-1-AP; 1:1000; incubated at room temperature for 1.5 hours) with sh-Control and sh-NEK1 transfected HeLa cells.



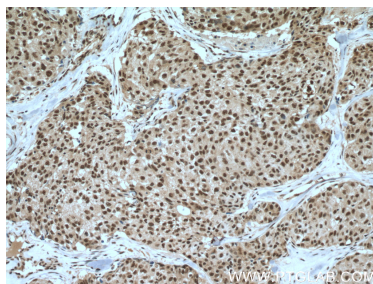
PC-12 cells were subjected to SDS PAGE followed by western blot with 27146-1-AP (NEK1 antibody) at dilution of 1:1000 incubated at room temperature for 1.5 hours.



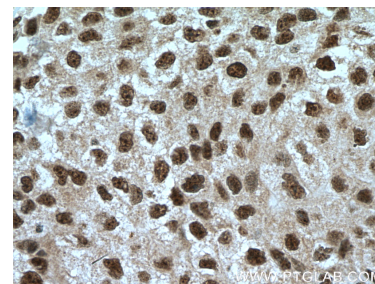
IP result of anti-NEK1 (IP:27146-1-AP, 4ug; Detection:27146-1-AP 1:500) with PC-12 cells lysate 3080 ug.



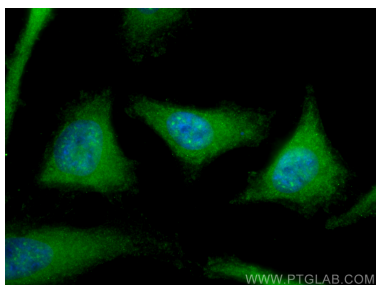
HeLa lysates prepared and IP of NEK1 performed using 1.0 μ g of 27146-1-AP coupled to protein A-Sepharose beads. The Ponceau stained transfers of each blot are shown. Data provided by YCharOS, an open science company with a mission to validate commercial antibodies to improve scientific reproducibility and transparency.



Immunohistochemical analysis of paraffin-embedded human lung cancer tissue slide using 27146-1-AP (NEK1 antibody) at dilution of 1:200 (under 10x lens. Heat mediated antigen retrieval with Tris-EDTA buffer (pH 9.0).



Immunohistochemical analysis of paraffin-embedded human lung cancer tissue slide using 27146-1-AP (NEK1 antibody) at dilution of 1:200 (under 40x lens. Heat mediated antigen retrieval with Tris-EDTA buffer (pH 9.0).



Immunofluorescent analysis of (-20°C Methanol) fixed HeLa cells using NEK1 antibody (27146-1-AP) at dilution of 1:400 and CoraLite®488-Conjugated Goat Anti-Rabbit IgG(H+L).