

FAM3B Polyclonal antibody

Catalog Number: 27131-1-AP

2 Publications

Basic Information

Catalog Number:

27131-1-AP

Size:

500 µg/ml

Source:

Rabbit

Isotype:

IgG

Immunogen Catalog Number:

AG25955

GenBank Accession Number:

BC057829

GeneID (NCBI):

54097

UNIPROT ID:

P58499

Full Name:

family with sequence similarity 3, member B

Calculated MW:

26 kDa

Observed MW:

26 kDa, 23 kDa

Purification Method:

Antigen affinity purification

Recommended Dilutions:

WB 1:200-1:1000

IHC 1:50-1:500

Applications

Tested Applications:

IHC, WB, ELISA

Cited Applications:

IHC

Species Specificity:

human, mouse

Cited Species:

human

Note-IHC: suggested antigen retrieval with TE buffer pH 9.0; (*) Alternatively, antigen retrieval may be performed with citrate buffer pH 6.0

Positive Controls:

WB : human milk tissue,

IHC : human pancreas tissue, mouse pancreas tissue

Background Information

FAM3B, also known as Pancreatic-derived factor (PANDER), is a secreted glycoprotein that belongs to the cytokine like-protein family. There are four members in this gene family (FAM3A, FAM3B, FAM3C and FAM3D). As a result of alternative splicing and alternate signal peptide cleavage sites, multiple isoforms are known. FAM3B is selectively expressed at a high level in pancreatic islets and at low levels in the small intestine, prostate, and certain neurons.

Notable Publications

Author	Pubmed ID	Journal	Application
Wenfeng Wang	35082524	Int J Gen Med	IHC
Renhong Huang	37251343	Front Pharmacol	IHC

Storage

Storage:

Store at -20°C. Stable for one year after shipment.

Storage Buffer:

PBS with 0.02% sodium azide and 50% glycerol pH 7.3.

Aliquoting is unnecessary for -20°C storage

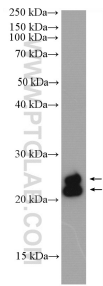
For technical support and original validation data for this product please contact:

T: 4006900926

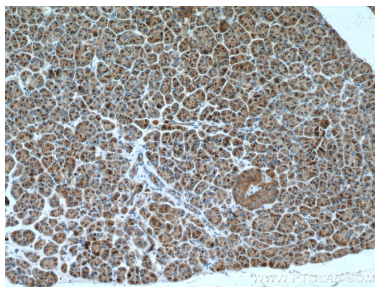
E: Proteintech-CN@ptglab.comW: ptgcn.com

This product is exclusively available under Proteintech Group brand and is not available to purchase from any other manufacturer.

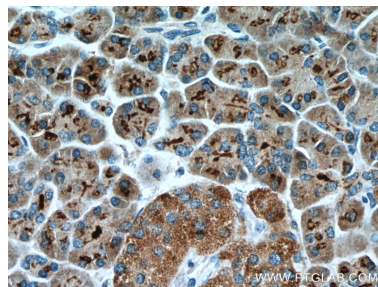
Selected Validation Data



human milk were subjected to SDS PAGE followed by western blot with 27131-1-AP (FAM3B antibody) at dilution of 1:300 incubated at room temperature for 1.5 hours.



Immunohistochemical analysis of paraffin-embedded human pancreas tissue slide using 27131-1-AP (FAM3B antibody) at dilution of 1:200 (under 10x lens. Heat mediated antigen retrieval with Tris-EDTA buffer (pH 9.0).



Immunohistochemical analysis of paraffin-embedded human pancreas tissue slide using 27131-1-AP (FAM3B antibody) at dilution of 1:200 (under 40x lens. Heat mediated antigen retrieval with Tris-EDTA buffer (pH 9.0).