

# ADAM15 Polyclonal antibody

Catalog Number: 27124-1-AP

## Basic Information

**Catalog Number:**

27124-1-AP

**Size:**

150 µg/ml

**Source:**

Rabbit

**Isotype:**

IgG

**Immunogen Catalog Number:**

AG25947

**GenBank Accession Number:**

BC014566

**GeneID (NCBI):**

8751

**UNIPROT ID:**

Q13444

**Full Name:**

ADAM metalloproteinase domain 15

**Calculated MW:**

93 kDa

**Observed MW:**

70 kDa

**Purification Method:**

Antigen affinity purification

**Recommended Dilutions:**

WB 1:500-1:3000

## Applications

**Tested Applications:**

WB, ELISA

**Species Specificity:**

human

**Positive Controls:**

WB : A549 cells, HUVEC cells

## Background Information

ADAM15, a member of the ADAM (a disintegrin and metalloprotease) family, is a membrane protein containing both protease and adhesion domains and may be involved in tumor invasion and metastasis (PMID:15756594). It is also named as MDC15. ADAM15 is required for the activation of the FAK and Src pathways to generate apoptosis resistance in response to apoptotic signalling or cell stress (PMID: 11741929). ADAM15 is processed during epididymal maturation and acrosome reaction and that it may play a role during sperm-egg binding. Jurkat and testicular cells express the precursor ADAM15 of 110 kDa, as well as the ADAM15 processing form, consisting of about 75-85 kDa (PMID:18390692). ADAM15 has some isoforms with the calculated molecular mass of 55-92 kDa.

## Storage

**Storage:**

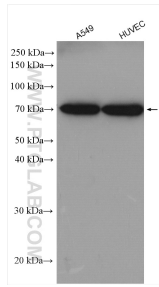
Store at -20°C. Stable for one year after shipment.

**Storage Buffer:**

PBS with 0.02% sodium azide and 50% glycerol pH 7.3.

Aliquoting is unnecessary for -20°C storage

## Selected Validation Data



Various lysates were subjected to SDS PAGE followed by western blot with 27124-1-AP (ADAM15 antibody) at dilution of 1:1500 incubated at room temperature for 1.5 hours.