

For Research Use Only

# MCF2L Polyclonal antibody

Catalog Number:27110-1-AP



## Basic Information

Catalog Number:

27110-1-AP

Source:

Rabbit

Isotype:

IgG

Immunogen Catalog Number:

AG25906

GenBank Accession Number:

BC020208

GeneID (NCBI):

23263

UNIPROT ID:

O15068

Full Name:

MCF.2 cell line derived transforming sequence-like

Calculated MW:

984aa,112 kDa; 1108aa,124 kDa

Observed MW:

102 kDa

Purification Method:

Antigen affinity purification

Recommended Dilutions:

WB: 1:5000-1:50000

## Applications

Tested Applications:

WB, ELISA

Species Specificity:

human, mouse, rat

Positive Controls:

WB : mouse brain tissue, rat brain tissue

## Background Information

MCF2L, also known as DBS or ARHGEF14, encodes a guanine nucleotide exchange factor that specifically interacts with GTP-bound Rac1 and modulates Rho/Rac signaling cascades. This protein regulates cytoskeletal dynamics and cell migration, with emerging evidence linking its dysregulation to cancer progression. MCF2L has been identified as a genetic locus associated with osteoarthritis (PMID: 25483302).

## Storage

Storage:

Store at -20°C. Stable for one year after shipment.

Storage Buffer:

PBS with 0.02% sodium azide and 50% glycerol, pH7.3

Aliquoting is unnecessary for -20°C storage

For technical support and original validation data for this product please contact:

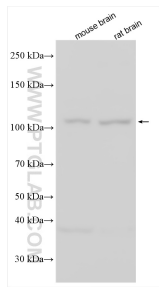
T: 4006900926

E: [Proteintech-CN@ptglab.com](mailto:Proteintech-CN@ptglab.com)

W: [ptgcn.com](http://ptgcn.com)

**This product is exclusively available under Proteintech Group brand and is not available to purchase from any other manufacturer.**

## Selected Validation Data



Various lysates were subjected to SDS PAGE followed by western blot with 27110-1-AP (MCF2L antibody) at dilution of 1:10000 incubated at room temperature for 1.5 hours.