

For Research Use Only

# CCDC124 Polyclonal antibody

Catalog Number: 27106-1-AP

1 Publications



## Basic Information

Catalog Number:

27106-1-AP

Size:

450 µg/ml

Source:

Rabbit

Isotype:

IgG

Immunogen Catalog Number:

AG25930

GenBank Accession Number:

BC013949

GeneID (NCBI):

115098

UNIPROT ID:

Q96CT7

Full Name:

coiled-coil domain containing 124

Observed MW:

30-32 kDa

Purification Method:

Antigen affinity purification

Recommended Dilutions:

WB 1:1000-1:4000

IF/ICC 1:50-1:500

## Applications

Tested Applications:

WB, IF/ICC, ELISA

Cited Applications:

WB, IF

Species Specificity:

human, mouse

Cited Species:

human

Positive Controls:

WB : mouse brain tissue, human placenta tissue, mouse liver tissue

IF/ICC : HeLa cells,

## Background Information

CCDC124 is a novel centrosomal and midbody protein that is highly conserved among species. It is ubiquitously expressed with high expression in brain, placenta, liver, spleen, and prostate. At telophase, CCDC124 dissociates from centrosomes and relocates to the midzone, subsequently accumulating at the midbody at cytokinesis. It interacts with the Ras-guanine nucleotide exchange factor 1B (RasGEF1B) and is involved in cytokinesis.

## Notable Publications

Author	Pubmed ID	Journal	Application
Kübra Hacıbeyoğlu	39009911	Protein J	WB,IF

## Storage

Storage:

Store at -20°C. Stable for one year after shipment.

Storage Buffer:

PBS with 0.02% sodium azide and 50% glycerol pH 7.3.

Aliquoting is unnecessary for -20°C storage

For technical support and original validation data for this product please contact:

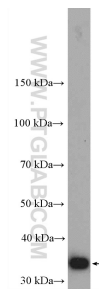
T: 4006900926

E: [Proteintech-CN@ptglab.com](mailto:Proteintech-CN@ptglab.com)

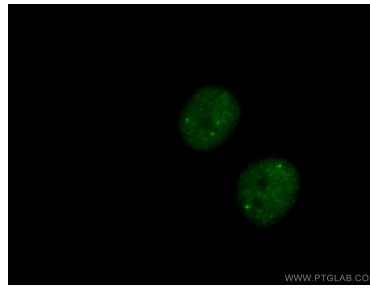
W: [ptgcn.com](http://ptgcn.com)

This product is exclusively available under Proteintech Group brand and is not available to purchase from any other manufacturer.

## Selected Validation Data



mouse brain tissue were subjected to SDS PAGE followed by western blot with 27106-1-AP (CCDC124 Antibody) at dilution of 1:2000 incubated at room temperature for 1.5 hours.



Immunofluorescent analysis of (-20°C Ethanol) fixed HeLa cells using 27106-1-AP (CCDC124 antibody) at dilution of 1:50 and Alexa Fluor 488-conjugated Goat Anti-Rabbit IgG(H+L).