

For Research Use Only

PCDH24 Polyclonal antibody

Catalog Number: 27103-1-AP **1 Publications**



Basic Information

Catalog Number: 27103-1-AP	GenBank Accession Number: BC130282	Purification Method: Antigen affinity purification
Size: 800 µg/ml	GeneID (NCBI): 54825	Recommended Dilutions: WB 1:200-1:1000 IHC 1:2000-1:8000
Source: Rabbit	UNIPROT ID: Q9BYE9	
Isotype: IgG	Full Name: protocadherin 24	
Immunogen Catalog Number: AG25840	Calculated MW: 1310 aa, 142 kDa	
	Observed MW: 140-150 kDa	

Applications

Tested Applications: IHC, WB, ELISA	Positive Controls: WB : mouse liver tissue, IHC : human kidney tissue, human liver tissue, human small intestine tissue, mouse small intestine tissue
Cited Applications: WB, IHC	
Species Specificity: human, mouse	
Cited Species: human	
Note-IHC: suggested antigen retrieval with TE buffer pH 9.0; (*) Alternatively, antigen retrieval may be performed with citrate buffer pH 6.0	

Background Information

Protocadherin-24 (PCDH24, also known as CDRH2 and protocadherin LKC) was originally identified as a novel member of the human non-classical cadherin family. PCDH24 may play a role in cell-cell adhesion and contact inhibition in epithelial cells. PCDH24 expression is markedly reduced in cancers derived from liver and colon tissues, indicating that PCDH24 may play a role as a tumor suppressor protein (PMID: 23115611). The calculated molecular weight of PCDH24 is 142 kDa.

Notable Publications

Author	Pubmed ID	Journal	Application
Xuechao Li	34532265	Transl Androl Urol	WB,IHC

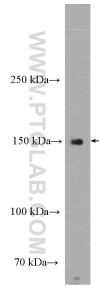
Storage

Storage:
Store at -20°C. Stable for one year after shipment.
Storage Buffer:
PBS with 0.02% sodium azide and 50% glycerol pH 7.3.
Aliquoting is unnecessary for -20°C storage

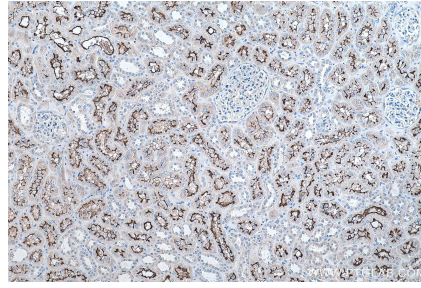
For technical support and original validation data for this product please contact:
T: 4006900926 E: Proteintech-CN@ptglab.com W: ptgcn.com

This product is exclusively available under Proteintech Group brand and is not available to purchase from any other manufacturer.

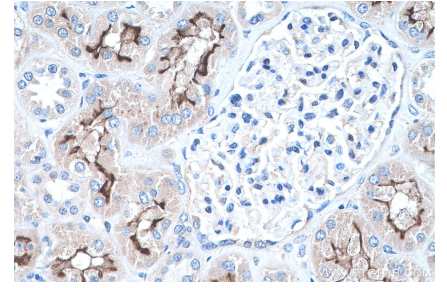
Selected Validation Data



mouse liver tissue were subjected to SDS PAGE followed by western blot with 27103-1-AP (PCDH24 Antibody) at dilution of 1:300 incubated at room temperature for 1.5 hours.



Immunohistochemical analysis of paraffin-embedded human kidney tissue slide using 27103-1-AP (PCDH24 antibody) at dilution of 1:4000 (under 10x lens). Heat mediated antigen retrieval with Tris-EDTA buffer (pH 9.0).



Immunohistochemical analysis of paraffin-embedded human kidney tissue slide using 27103-1-AP (PCDH24 antibody) at dilution of 1:4000 (under 40x lens). Heat mediated antigen retrieval with Tris-EDTA buffer (pH 9.0).