

For Research Use Only

XKRX Polyclonal antibody

Catalog Number: 27049-1-AP



Basic Information

Catalog Number: 27049-1-AP	GenBank Accession Number: BC137010	Purification Method: Antigen affinity purification
Concentration: 350 ug/ml	GeneID (NCBI): 402415	Recommended Dilutions: WB 1:500-1:1000 IHC 1:50-1:500
Source: Rabbit	UNIPROT ID: Q6PP77	
Isotype: IgG	Full Name: XK, Kell blood group complex subunit-related, X-linked	
Immunogen Catalog Number: AG25266	Calculated MW: 462 aa, 54 kDa	
	Observed MW: 30 kDa	

Applications

Tested Applications: WB, IHC, ELISA	Positive Controls:
Species Specificity: human	WB : human placenta tissue,
Note-IHC: suggested antigen retrieval with TE buffer pH 9.0; (*) Alternatively, antigen retrieval may be performed with citrate buffer pH 6.0	IHC : human placenta tissue,

Background Information

XKRX (XK-associated X-linked protein) is a component of the XK/Kell complex in the Kell blood group system, encoding a membrane protein with multiple transmembrane domains that is exposed on the cell surface and may function as a membrane transport protein. It is expressed predominantly in the placenta and syncytiotrophoblasts. It has 2 isoforms, with molecular weights of 52 kDa and 28 kDa respectively. Its function has not been fully clarified yet.

Storage

Storage:
Store at -20°C. Stable for one year after shipment.
Storage Buffer:
PBS with 0.02% sodium azide and 50% glycerol, pH7.3
Aliquoting is unnecessary for -20°C storage

For technical support and original validation data for this product please contact:

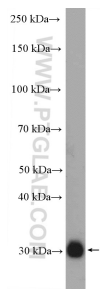
T: 4006900926

E: Proteintech-CN@ptglab.com

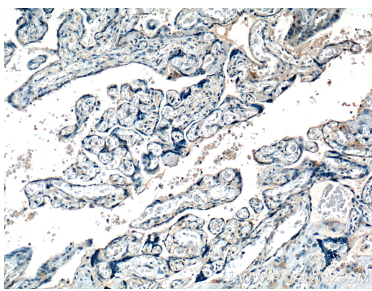
W: ptgcn.com

This product is exclusively available under Proteintech Group brand and is not available to purchase from any other manufacturer.

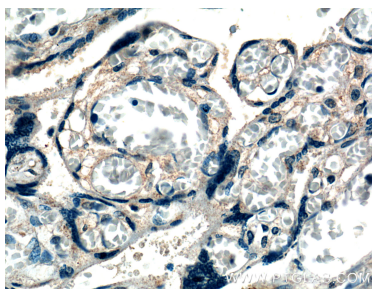
Selected Validation Data



human placenta tissue were subjected to SDS PAGE followed by western blot with 27049-1-AP (XKRX Antibody) at dilution of 1:600 incubated at room temperature for 1.5 hours.



Immunohistochemical analysis of paraffin-embedded human placenta tissue slide using 27049-1-AP (XKRX Antibody) at dilution of 1:200 (under 10x lens).



Immunohistochemical analysis of paraffin-embedded human placenta tissue slide using 27049-1-AP (XKRX Antibody) at dilution of 1:200 (under 40x lens).