

For Research Use Only

# SYS1 Polyclonal antibody, PBS Only

Catalog Number: 27048-1-PBS



## Basic Information

Catalog Number:

27048-1-PBS

Source:

Rabbit

Isotype:

IgG

Immunogen Catalog Number:

AG24719

GenBank Accession Number:

BC048286

GeneID (NCBI):

90196

UNIPROT ID:

Q8N2H4

Full Name:

SYS1 Golgi-localized integral membrane protein homolog (S. cerevisiae)

Calculated MW:

156 aa, 18 kDa

Purification Method:

Antigen affinity purification

## Applications

Tested Applications:

IHC, Indirect ELISA

Species Specificity:

human

## Background Information

SYS1 forms a complex with ADP-ribosylation factor-related protein-1 (ARFRP1; 604699) and targets ARFRP1 to the Golgi apparatus (PMID: 15077113).

## Storage

Storage:

Store at -80°C.

**The product is shipped with ice packs. Upon receipt, store it immediately at -80°C**

Storage Buffer:

PBS only, pH7.3

For technical support and original validation data for this product please contact:

T: 4006900926

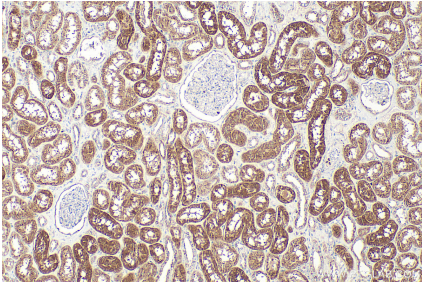
E: [Proteintech-CN@ptglab.com](mailto:Proteintech-CN@ptglab.com)

W: [ptgcn.com](http://ptgcn.com)

**This product is exclusively available under Proteintech Group brand and is not available to purchase from any other manufacturer.**

---

## Selected Validation Data



Immunohistochemical analysis of paraffin-embedded human kidney tissue slide using 27048-1-AP (SYS1 antibody) at dilution of 1:200 (under 10x lens). Heat mediated antigen retrieval with Tris-EDTA buffer (pH 9.0). This data was developed using the same antibody clone with 27048-1-PBS in a different storage buffer formulation.