

For Research Use Only

# SYS1 Polyclonal antibody

Catalog Number: 27048-1-AP



## Basic Information

Catalog Number:

27048-1-AP

Source:

Rabbit

Isotype:

IgG

Immunogen Catalog Number:

AG24719

GenBank Accession Number:

BC048286

GeneID (NCBI):

90196

UNIPROT ID:

Q8N2H4

Full Name:

SYS1 Golgi-localized integral membrane protein homolog (S. cerevisiae)

Calculated MW:

156 aa, 18 kDa

Purification Method:

Antigen affinity purification

Recommended Dilutions:

IHC: 1:50-1:500

## Applications

Tested Applications:

IHC, ELISA

Species Specificity:

human

**Note-IHC: suggested antigen retrieval with TE buffer pH 9.0; (\*) Alternatively, antigen retrieval may be performed with citrate buffer pH 6.0**

Positive Controls:

IHC : human kidney tissue,

## Background Information

SYS1 forms a complex with ADP-ribosylation factor-related protein-1 (ARFRP1; 604699) and targets ARFRP1 to the Golgi apparatus (PMID: 15077113).

## Storage

Storage:

Store at -20°C. Stable for one year after shipment.

Storage Buffer:

PBS with 0.02% sodium azide and 50% glycerol, pH7.3

Aliquoting is unnecessary for -20°C storage

For technical support and original validation data for this product please contact:

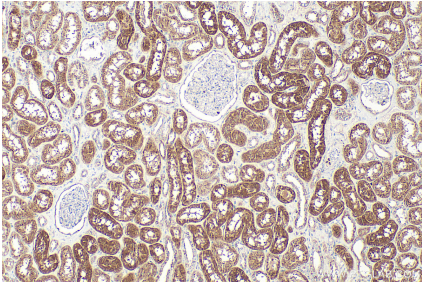
T: 4006900926

E: Proteintech-CN@ptglab.com

W: ptgcn.com

**This product is exclusively available under Proteintech Group brand and is not available to purchase from any other manufacturer.**

## Selected Validation Data



Immunohistochemical analysis of paraffin-embedded human kidney tissue slide using 27048-1-AP (SY51 antibody) at dilution of 1:200 (under 10x lens). Heat mediated antigen retrieval with Tris-EDTA buffer (pH 9.0).